



C

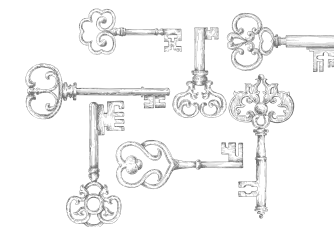
THE  
COLLECTION

---

SHREWSBURY ROAD

D/4





## THE COLLECTION

Style, history and modern elegance all come together in The Collection, a private development of seven substantial residences at 20 Shrewsbury Road, the former home of Sir Alfred Chester Beatty's library. Nestled among the grand mansions and embassy residences synonymous with the area, these incredible properties bring a new level of elegance and architectural design to Dublin 4.

The Collection is designed by a group of world-class architects and designers who have produced elegant, modern homes that are both distinctive and reflective of the site's proud heritage.

The information in this document including any plans, descriptions, images, specifications or dimensions in it or separately provided or communicated to prospective buyers is indicative and intended to act as a guide only. Any such information, plans, descriptions, images, specifications or dimensions (including any information or details which may be given verbally) should not be relied upon as the basis for any offer or contract and do not constitute any statement of fact or any representation or warranty. Any plans given are not to scale. Any measurements/areas are estimates only and may vary. Prospective buyers are responsible for making their own enquiries and satisfying themselves, by inspection or otherwise as to the correctness of each of the statements in this document. Glenveagh Homes Ltd may make changes to design, features, finishes and specifications. The finished home may therefore vary from the information provided. Information about transport and local amenities is provided as a guide only and may be subject to change. Please refer to your contract pack (if applicable) for further information on anything not covered by this document. Glenveagh Homes Ltd does not authorise the Agent(s) or its staff to make or give any representation or warranty in respect of this development. All statements contained in this document are made without responsibility on the part of Glenveagh Homes Ltd.











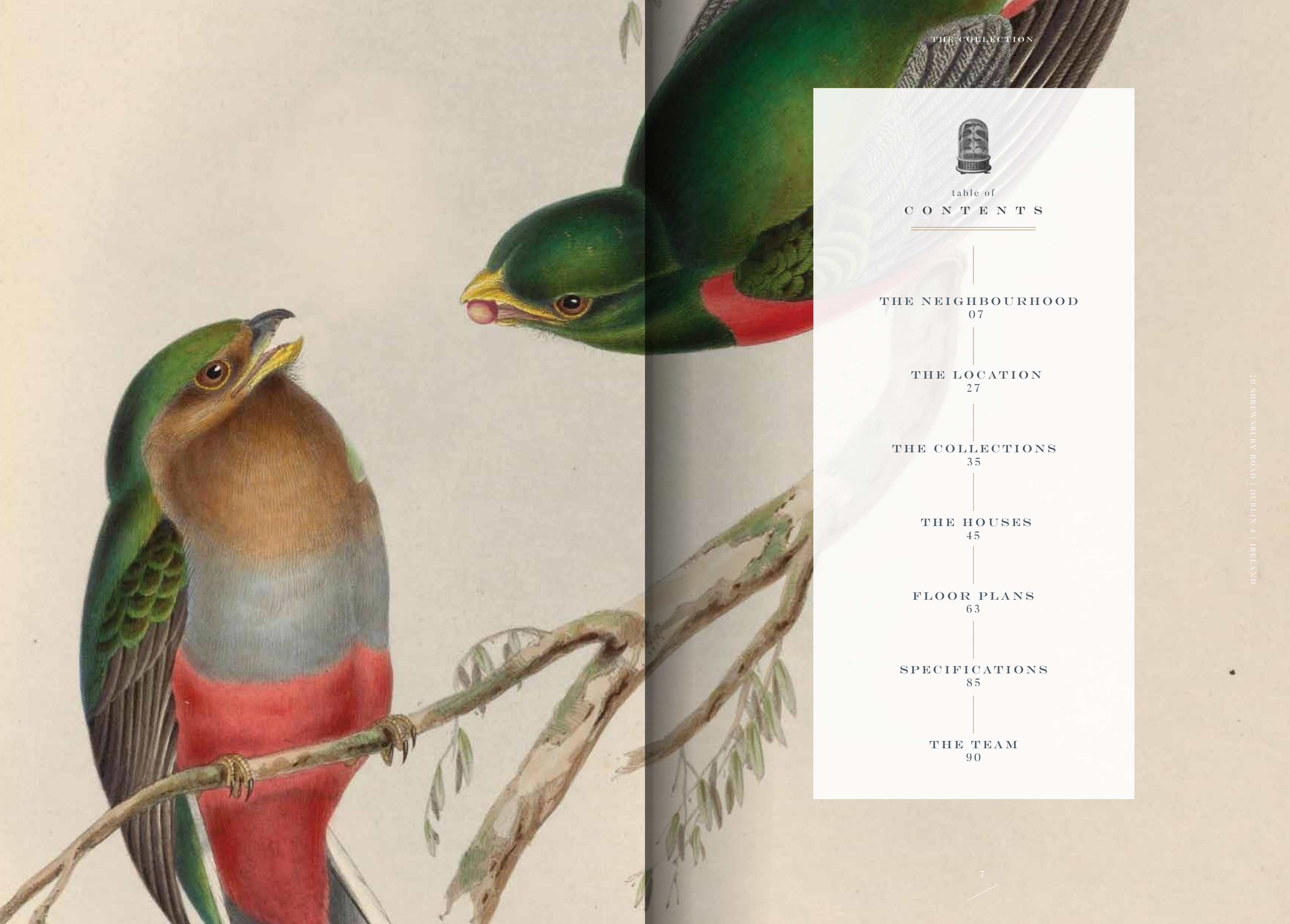


table of  
CONTENTS

THE NEIGHBOURHOOD  
07

THE LOCATION  
27

THE COLLECTIONS  
35

THE HOUSES  
45

FLOOR PLANS  
63

SPECIFICATIONS  
85

THE TEAM  
90





welcome to  
S H R E W S B U R Y  
R O A D

One of Dublin's most exclusive and desirable addresses, Shrewsbury Road traces its origins back to the Earl of Pembroke's estate. The street received the name of Shrewsbury formally in 1874, taken from the marriage of the 13th Earl of Pembroke to Lady Talbot, a cousin of the Earl of Shrewsbury.

Shrewsbury Road is now considered one of Dublin's most striking residential roads, with a mix of house styles reflecting features of the Victorian, Edwardian, Free Style and Arts & Crafts movements from the late 19th and early 20th centuries. The Collection brings a new layer of architectural design to this historic road, using the materials and features of the existing neighbourhood in a modern context that is both sophisticated and sympathetic to the surrounding homes.

20 SHREWSBURY ROAD | DUBLIN 4 | IRELAND





An historic neighbour  
**R O Y A L D U B L I N**  
**S O C I E T Y**

Formed in 1731, The Royal Dublin Society (RDS) was established to promote and develop Irish agriculture, arts, industry and science. The RDS moved to Ballsbridge in 1879, to its current location next to The Collection.

Now, the RDS is the home of local and international events, containing, among other features, a concert hall, a library and a fine sporting arena that is already iconic within European rugby.

The RDS is also home to the annual Horse Show, which in 1926, held the first Aga Khan Trophy contest; the trophy has since become the world's most prestigious show jumping competition.





Explore & discover  
**HERBERT PARK**

Just a stone's throw from  
The Collection, Herbert  
Park is one of Dublin's  
oldest and most popular  
parks to visit.

In 1903, Lord Pembroke gifted the land to the Pembroke Township as a public park to mark the coming of age of his son. Named after Lord Pembroke's father, Sidney Herbert, the park opened to the public in 1911 after being used as the location for the 1907 Dublin International Exhibition. Today the park is a popular relaxation and recreational spot for both locals and visitors.





## THE NEIGHBOURHOOD



Shelbourne Social, Dylan McGrath

Ballsbridge residents are just a short walk away from the south city centre, which is packed with Dublin's best restaurants and bars.

Closer to home is a wealth of Michelin-recommended restaurants, including Forest Avenue, The Old Spot, Chop House and Mulberry Garden, all of which are a short stroll from The Collection.



The Seasons Restaurant, InterContinental Dublin, Ballsbridge





*enjoy a*  
**S P O R T I N G**  
**L I F E**

---

Ballsbridge and Dublin 4 offers  
its residents a fine choice  
of sporting clubs & facilities.

The Aviva stadium is one of The Collection's most famous neighbours. This world-class 51,000 seat stadium is home to the Irish rugby team and has played host to many memorable sporting and entertainment events over the years.

Golfers can choose between two local world-class courses: Elm Park Golf Club (9 holes) and Milltown Golf Club (18 holes). For the tennis enthusiast, both Fitzwilliam Lawn Tennis Club and Donnybrook Lawn Tennis Club are located in the immediate area.

If you prefer immersing yourself in nature, a short stroll will bring you to the idyllic coast at Sandymount. Enjoy walking along the peaceful promenade or try exploring the world of water sports further down the coast at Dun Laoghaire's famous and historic yacht clubs.

Aviva Stadium



An unmatched  
LOCATION

Dublin has history, charm, sights, museums,  
galleries, theatres, shops, pubs, restaurants  
and an abundance of character.



Private jet

Dublin Airport

16.2km / 23 minute drive

Air Charter Service Plc



Private car hire

Nicholas Glynn

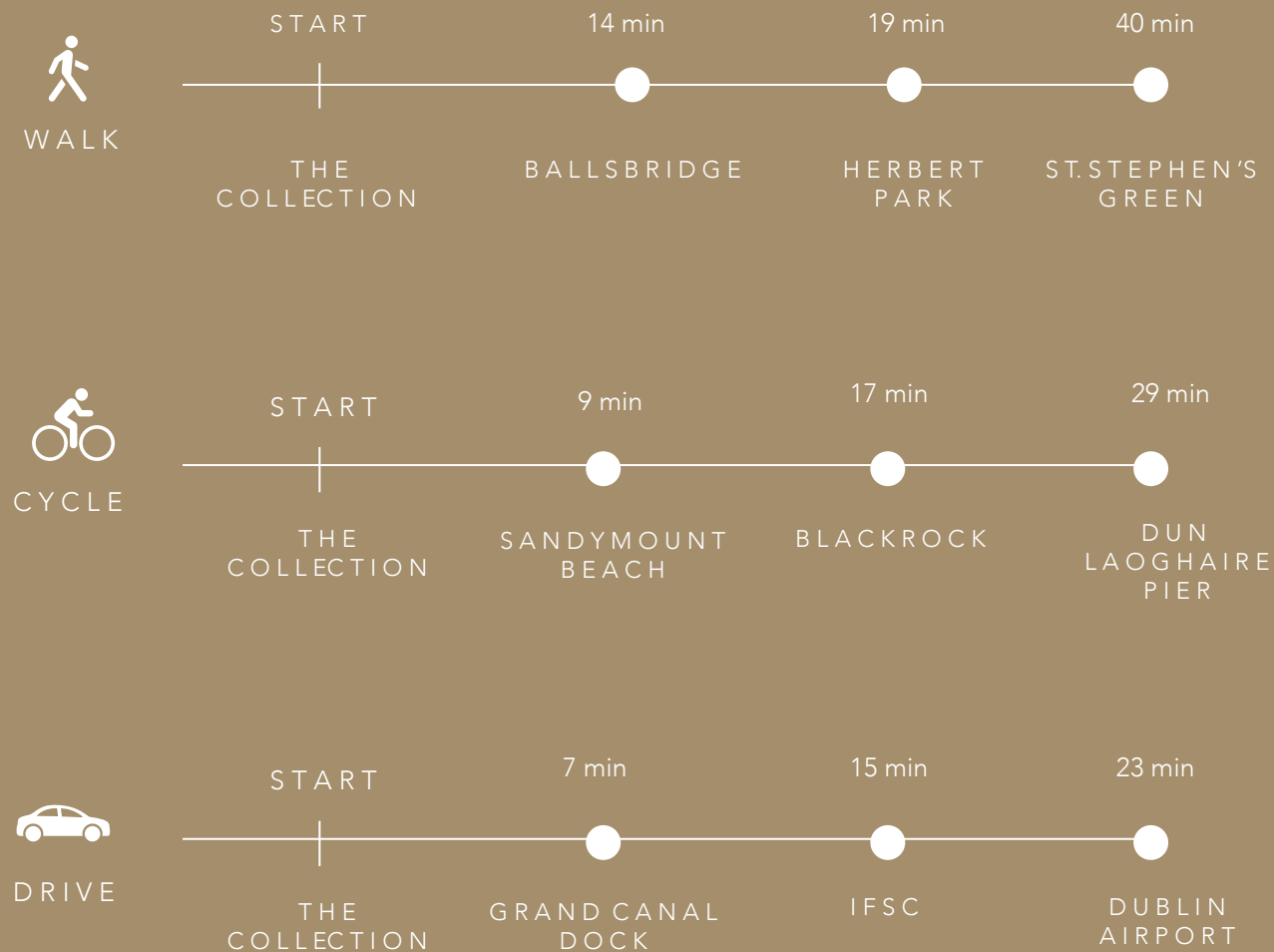
Part of the National Chauffeur

Drivers Association Limited



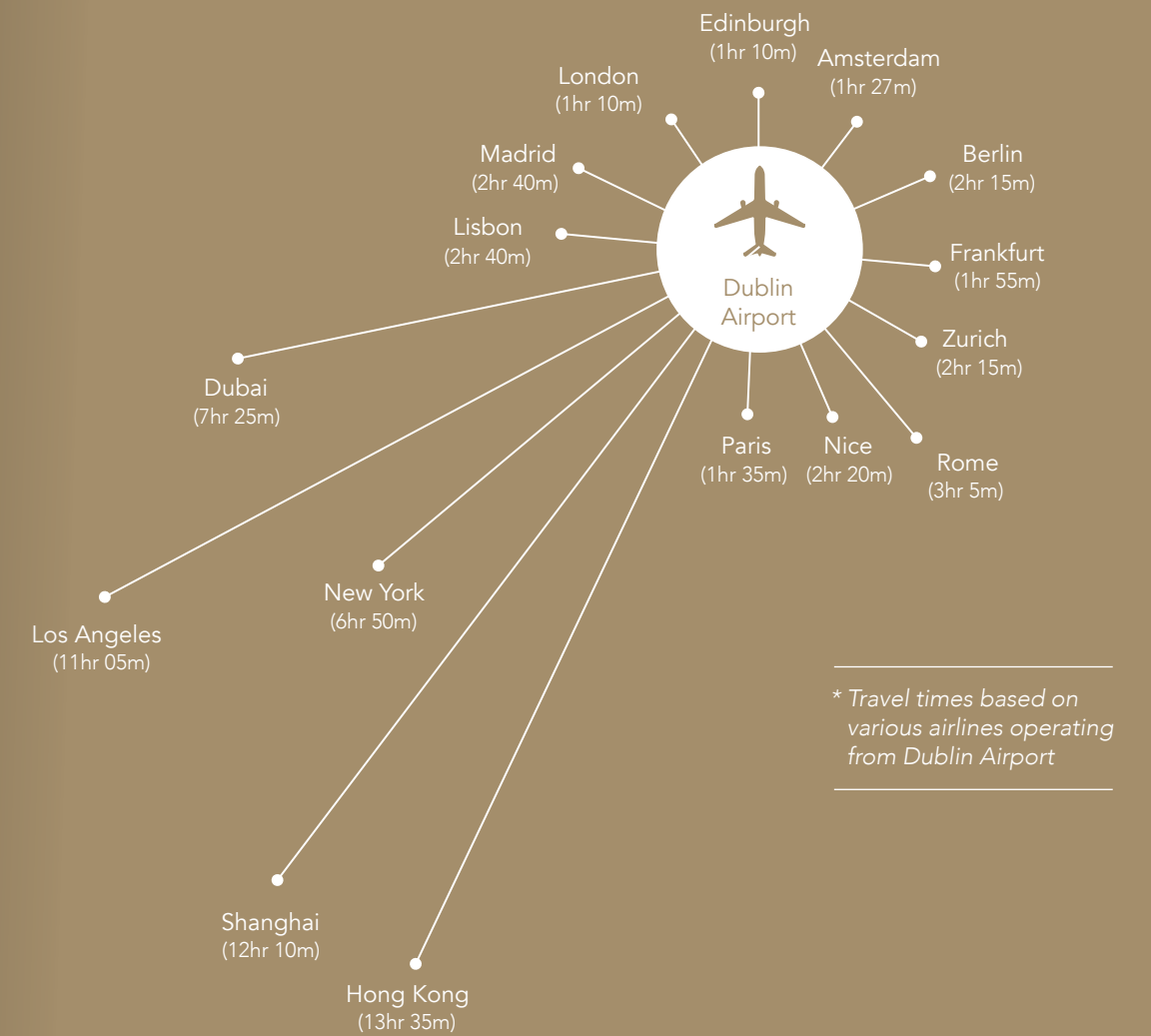


## LOCAL TRAVEL TIMES \*



\* Travel times may vary

## INTERNATIONAL TRAVEL TIMES \*

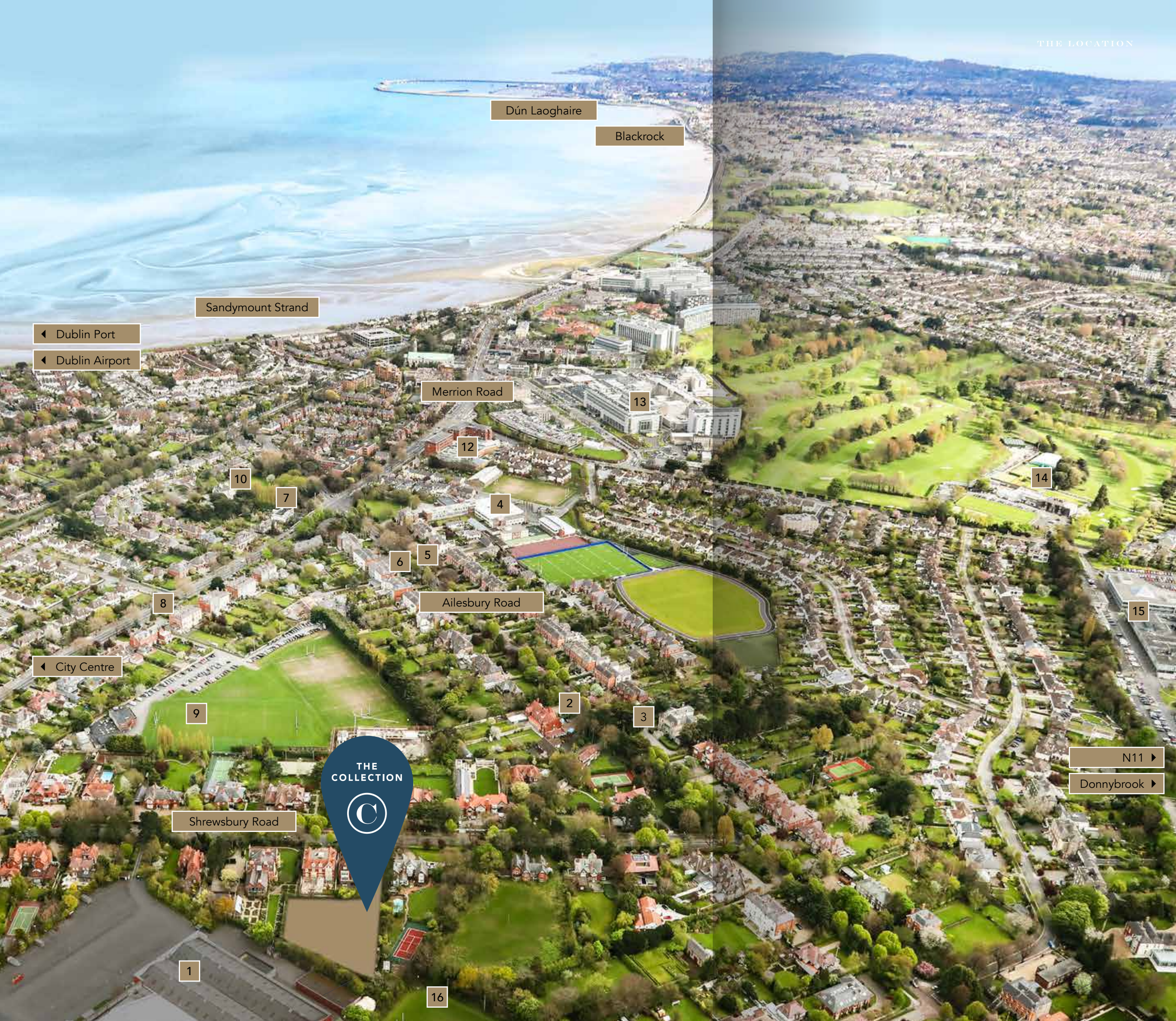


\* Travel times based on various airlines operating from Dublin Airport

### DUBLIN AIRPORT

 <p>23 minute drive time from Shrewsbury Rd</p>	 <p>Direct flights to over 200 destinations</p>	 <p>Over 40 international airlines</p>	 <p>US customs &amp; immigration pre-clearance</p>
--	--	---	---





THE LOCATION

An unmatched  
LOCATION

1. Royal Dublin Society (RDS)
2. Embassy of the People's Republic of China
3. French Ambassador's Residence
4. St. Michael's College
5. Embassy of Poland
6. Embassy of Switzerland
7. Embassy of the Kingdom of the Netherlands
8. Embassy of India
9. Wanderers Rugby Club
10. Embassy of Spain
11. Sydney Parade Dart Station
12. Merrion Shopping Centre
13. St. Vincent's University Hospital
14. Elm Park Golf and Sports Club
15. Radio Teilifís Éireann (RTÉ)
16. Old Belvedere Rugby Club



THE COLLECTION is named after Sir Alfred Chester Beatty, who housed a famous library and collection at the site, one of many historically important collections in Dublin.

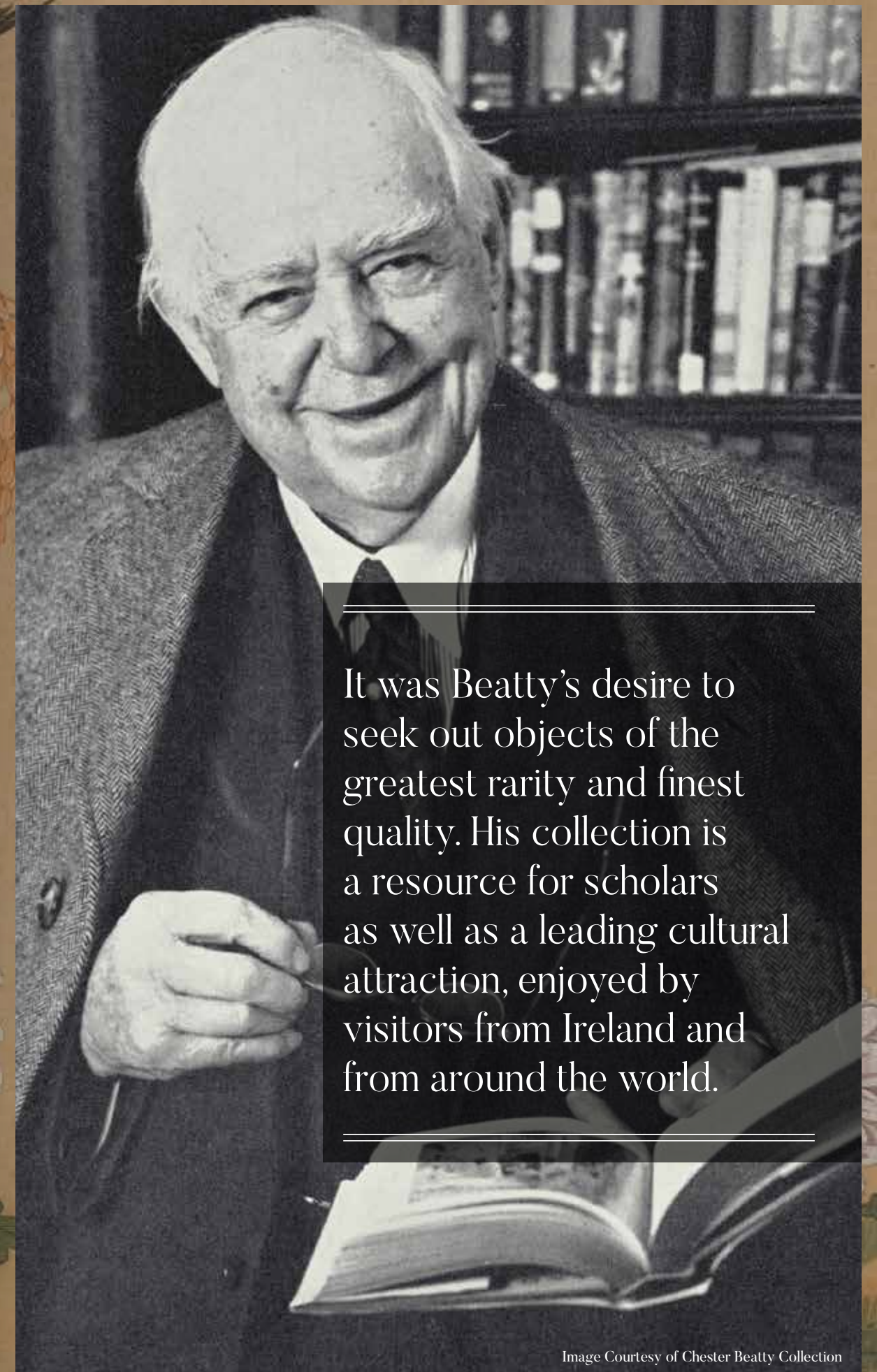
# The Collector /

Sir Alfred Chester Beatty (1875-1968) was one of the greatest collectors of the twentieth century, and an extraordinary friend to Ireland. His collection was housed at 20 Shrewsbury Road for over 40 years.

Chester Beatty was born in New York in 1875 of Irish, Scots, English and New England descent. A millionaire by the age of 30, he had always been a collector—of minerals and stamps, and later of Chinese snuff bottles, often carved from gemstones. In time, he began to buy books and manuscripts, and by the time he left America for Britain in 1913 he was already a serious and discerning collector. In 1949 he visited Ireland, where, as a renowned collector and leading businessman, senior officials encouraged him with his plan to build a library in Dublin. He moved his collection in 1950 and in the same year bought a site in Shrewsbury Road where his purpose-built Library opened in 1953.

Handscroll of birds and flowers with ink and colours on silk, made by an unknown artist c. 1800 in China.

Image Courtesy of Chester Beatty Collection



It was Beatty's desire to seek out objects of the greatest rarity and finest quality. His collection is a resource for scholars as well as a leading cultural attraction, enjoyed by visitors from Ireland and from around the world.

Image Courtesy of Chester Beatty Collection



# Dublin, A City of Collections

The Chester Beatty Library is just one collection in the historical and culturally rich city of Dublin. Discover for yourself some of the other famous collections in the city, all easily accessed by The Collection residents.



## THE COLLECTIONS



### THE LONG ROOM THE OLD LIBRARY / TRINITY COLLEGE

Filled with a collection of 200,000 of the College's oldest books, The Long Room also houses one of the few remaining copies of the 1916 Proclamation of the Irish Republic.



3km from The Collection



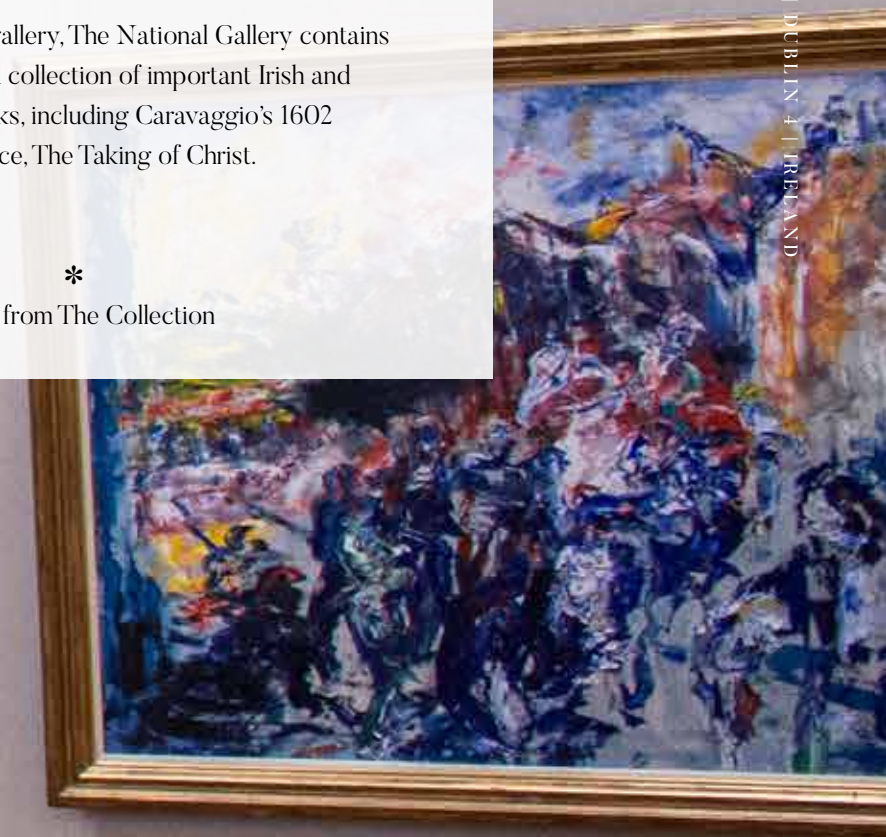


## THE NATIONAL GALLERY / MERRION SQ

Dublin's foremost art gallery, The National Gallery contains a world-renowned collection of important Irish and international works, including Caravaggio's 1602 masterpiece, The Taking of Christ.



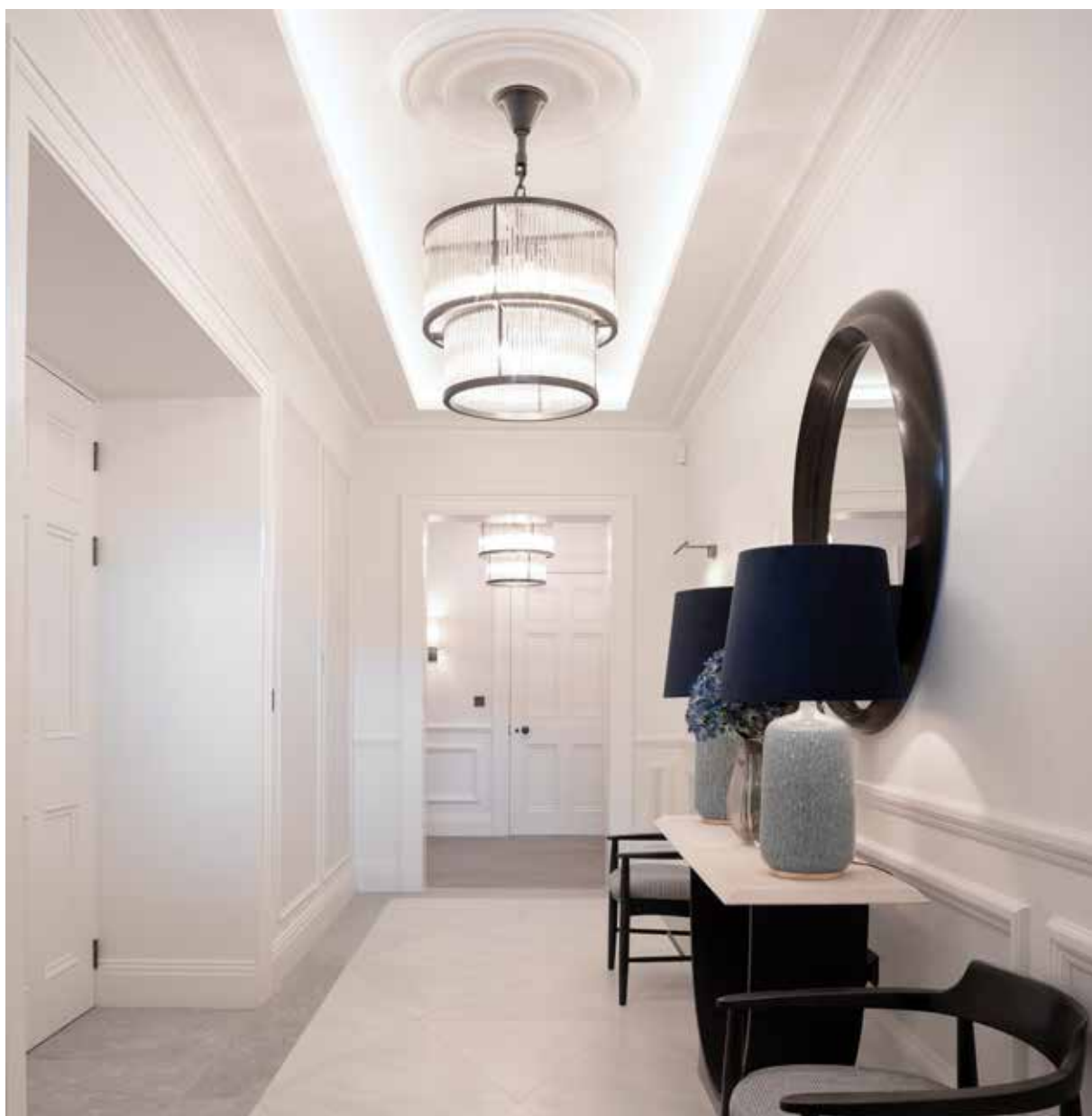
2.8km from The Collection











—  
Hallway  
THE COLLECTION  
—



—  
Garden Patio  
THE COLLECTION  
—





20 SHREWSBURY ROAD | DUBLIN 4 | IRELAND

—  
Drawing Room  
THE COLLECTION  
—





20 SHREWSBURY ROAD | DUBLIN 4 | IRELAND

Kitchen  
THE COLLECTION





—  
Gym  
THE COLLECTION  
—



—  
Study  
THE COLLECTION  
—





Principal Bedroom Suite  
THE COLLECTION



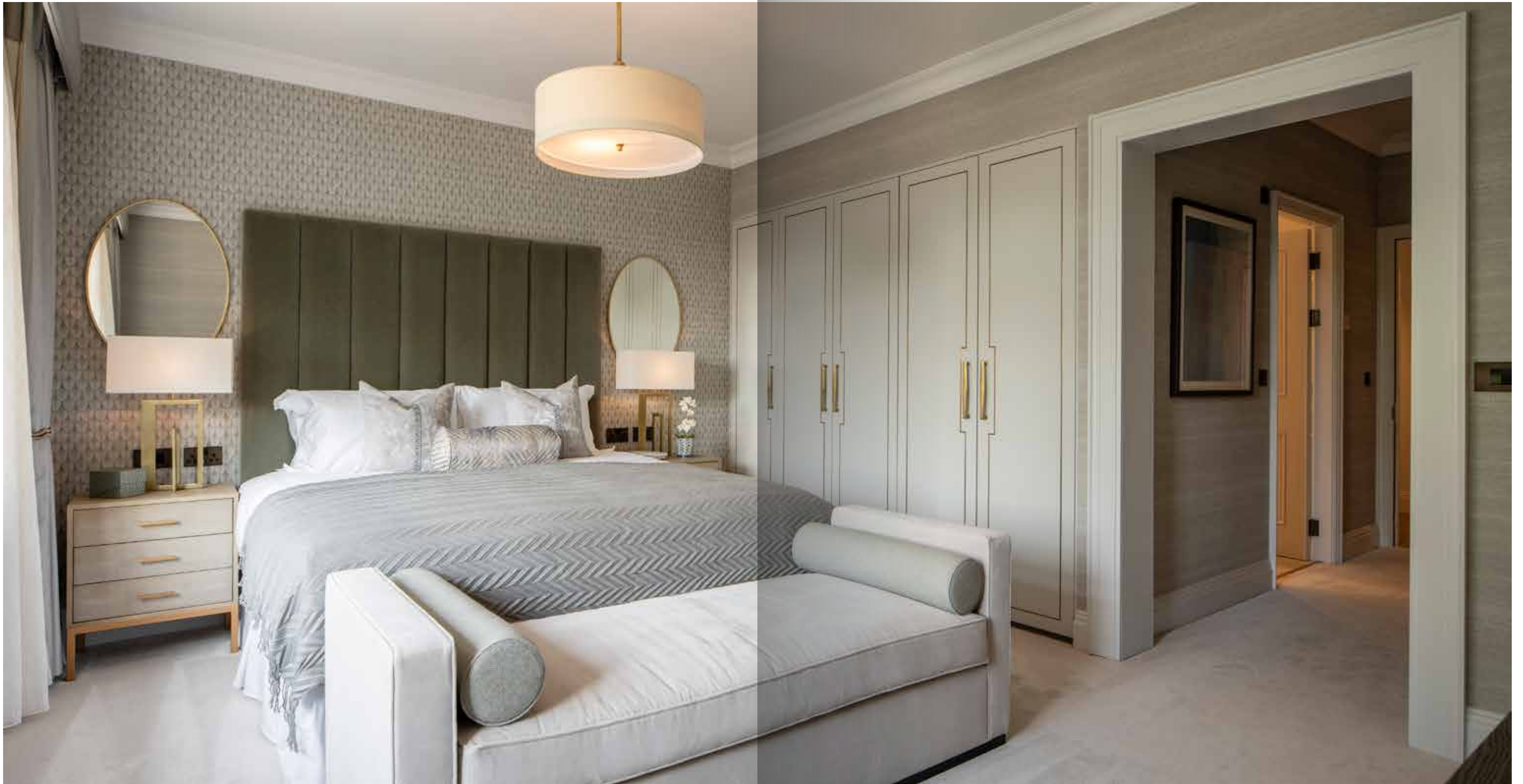


Principal Dressing  
THE COLLECTION



Bedroom  
THE COLLECTION





20 SHREWSBURY ROAD | DUBLIN 4 | IRELAND





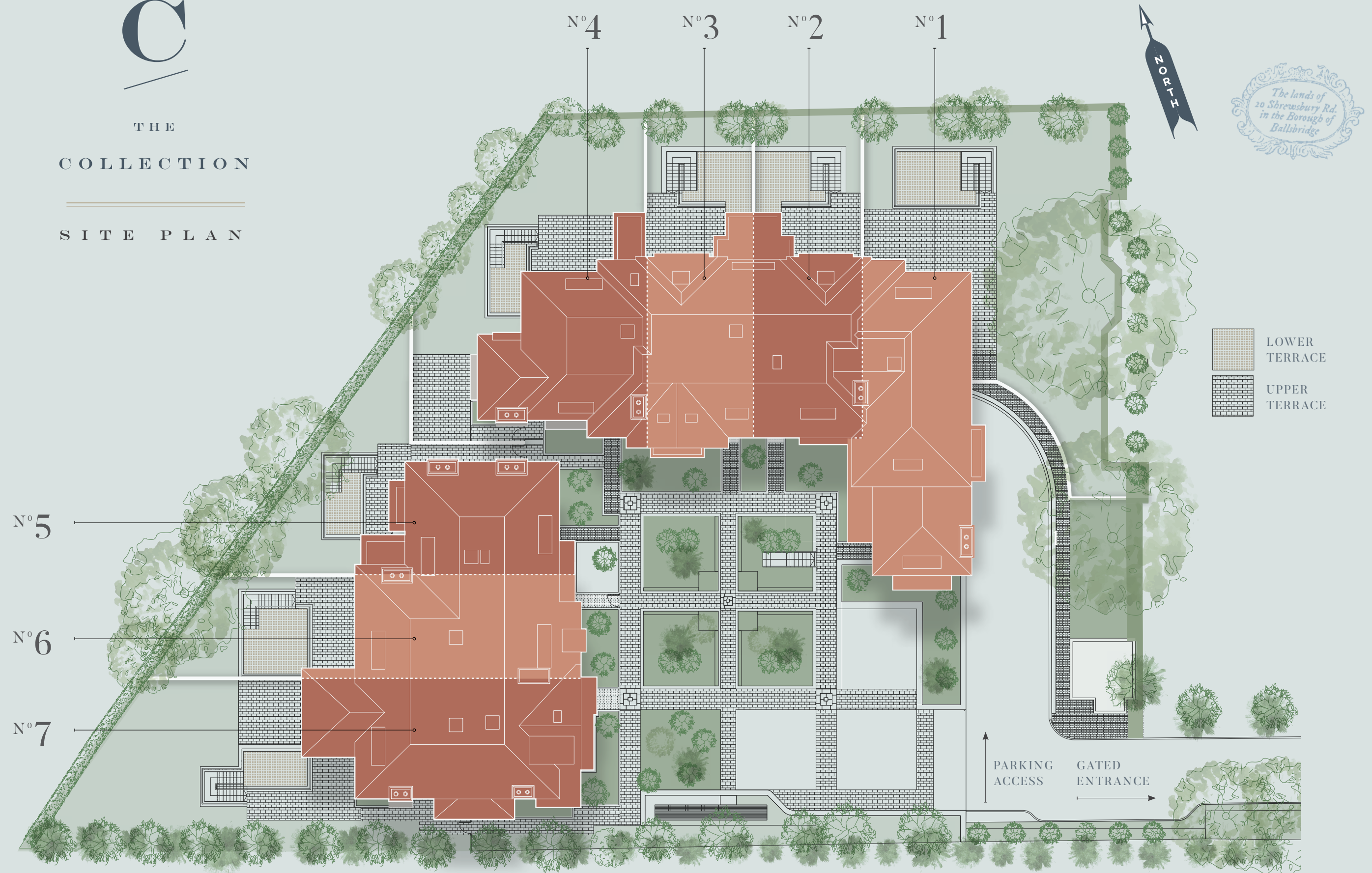
Cinema/Library  
THE COLLECTION



C

THE  
COLLECTION

SITE PLAN



All images/floorplans used are for illustrative purposes only and are intended to convey the concept and vision for the development.



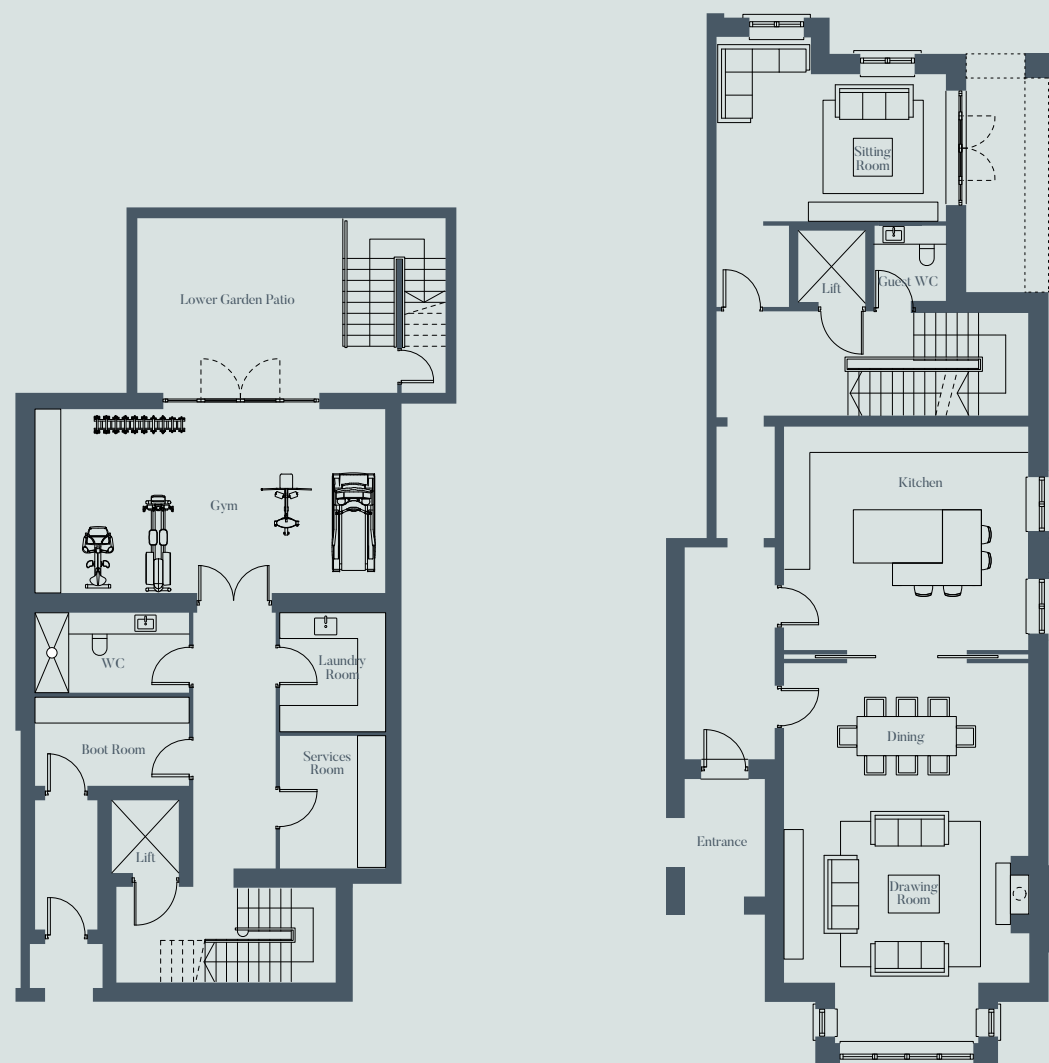
N<sup>o</sup>1



TOTAL FLOOR AREA

463 sq.m / 4,983 sq.ft\*

(\*plus additional garage)



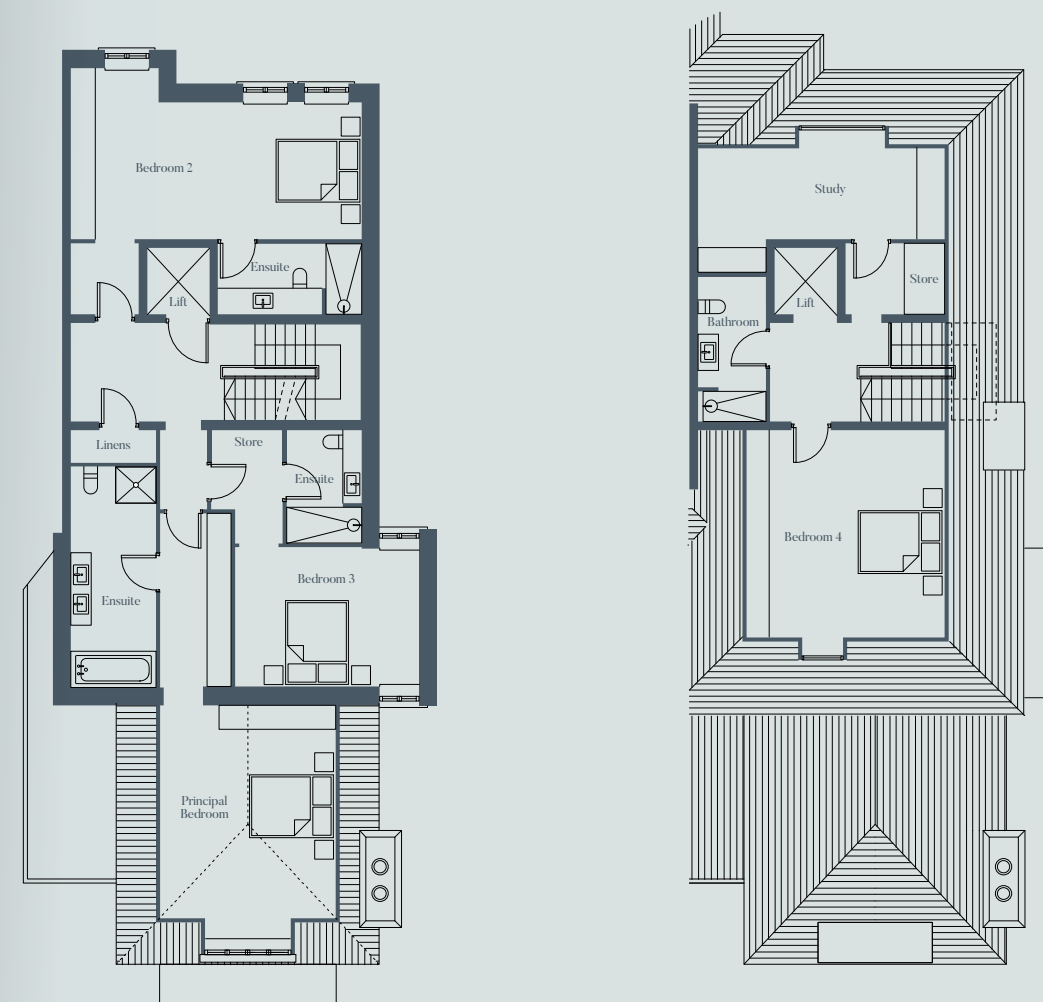
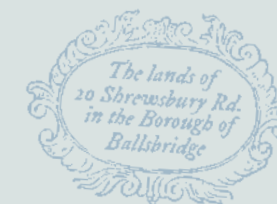
BASEMENT LEVEL

GROUND FLOOR

NUMBER ONE

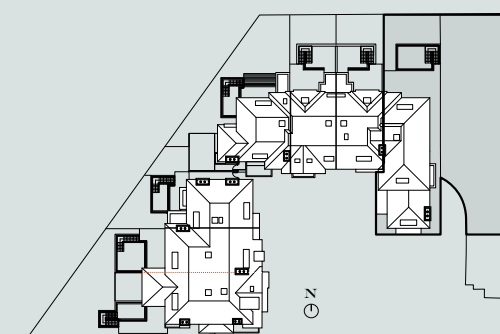
All images/floorplans used are for illustrative purposes only and are intended to convey the concept and vision for the development.

THE FLOOR PLANS



FIRST FLOOR

SECOND FLOOR



N<sup>o</sup>1



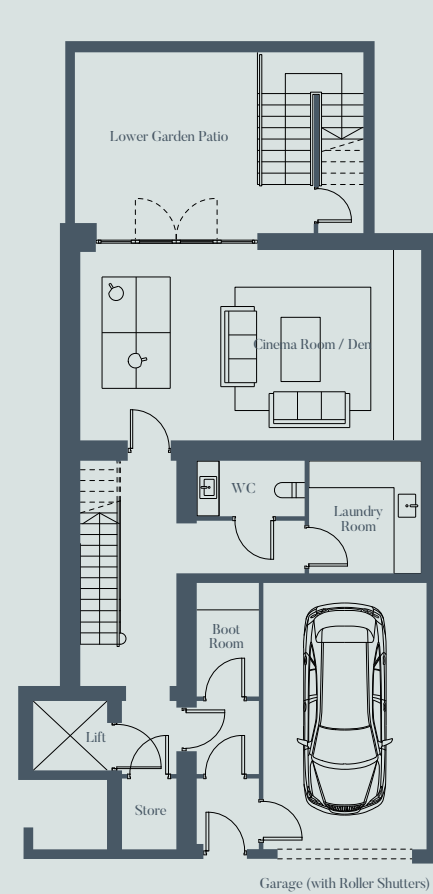
N<sup>o</sup> 2



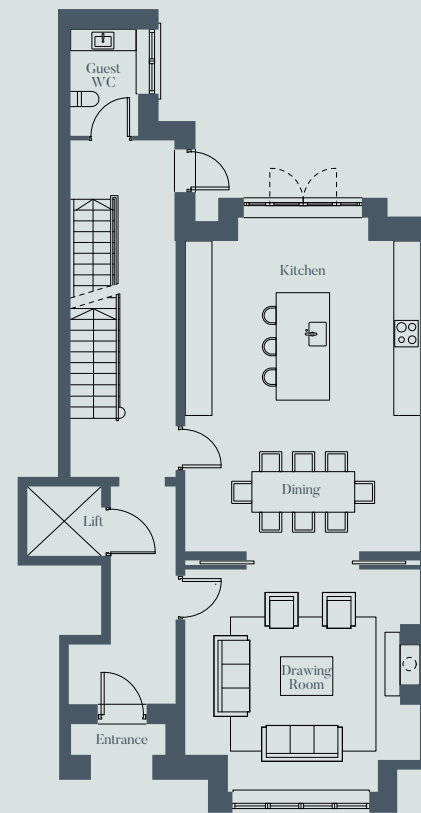
TOTAL FLOOR AREA

370 sq.m / 3,986 sq.ft\*

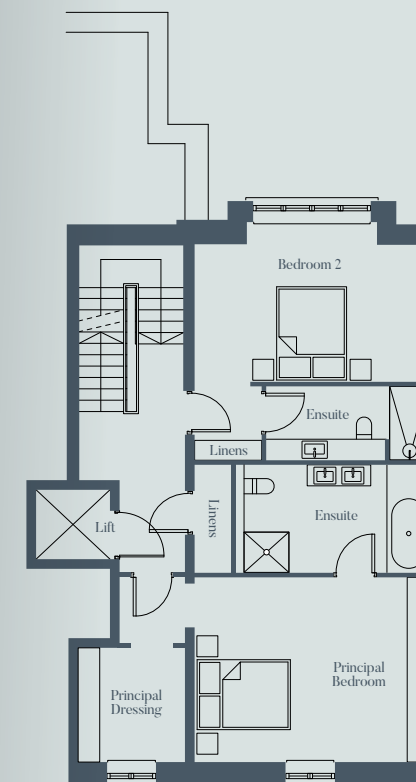
(\*size includes garage)



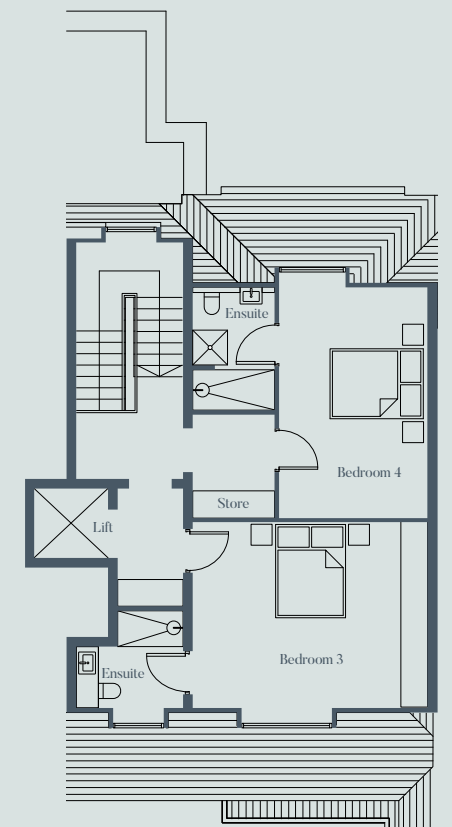
BASEMENT LEVEL



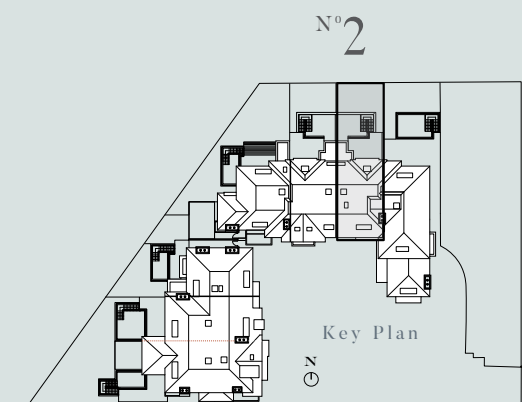
GROUND FLOOR



FIRST FLOOR



SECOND FLOOR



N<sup>o</sup> 2

Key Plan

NUMBER TWO

All images/floorplans used are for illustrative purposes only and are intended to convey the concept and vision for the development.





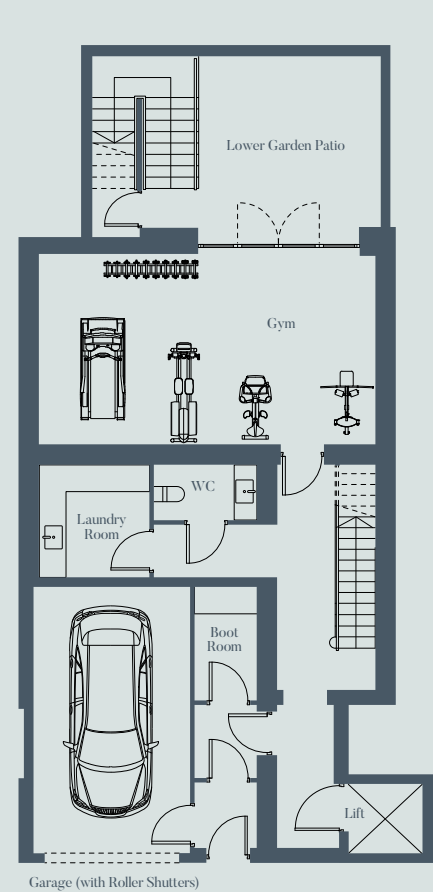
N<sup>o</sup> 3



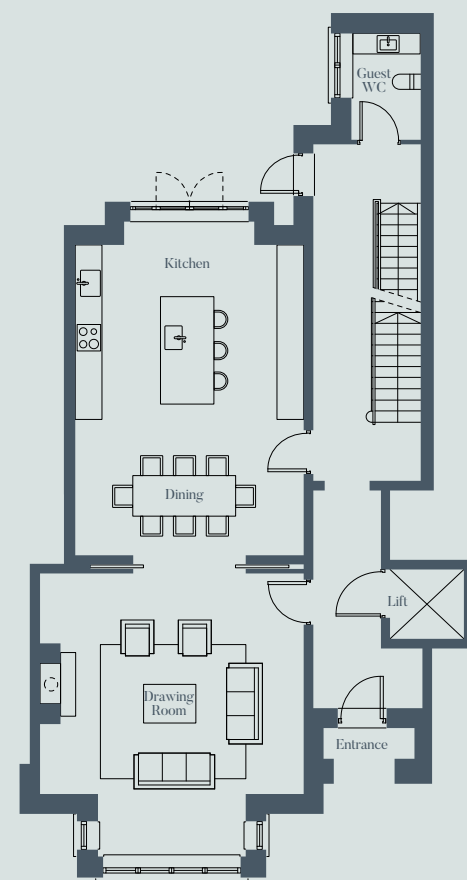
TOTAL FLOOR AREA

389 sq.m / 4,185 sq.ft\*

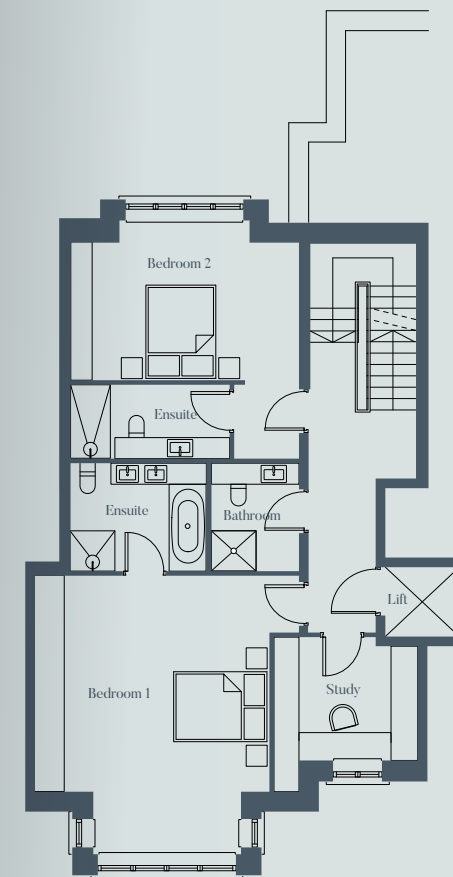
(\*size includes garage)



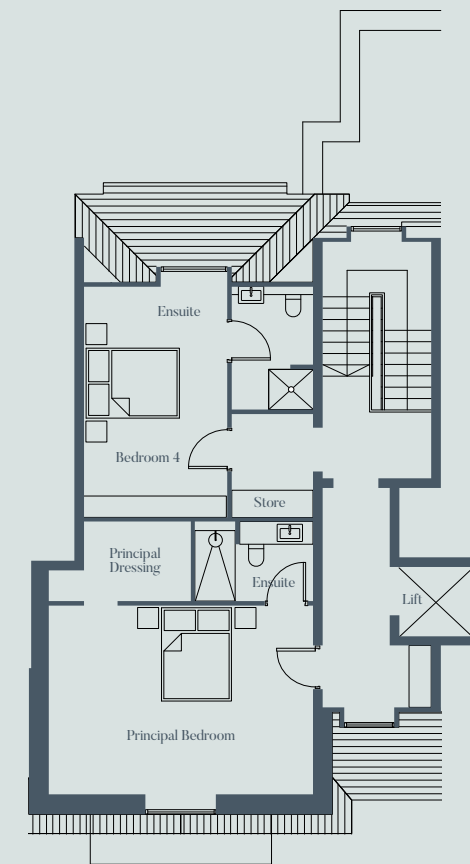
BASEMENT LEVEL



GROUND FLOOR



FIRST FLOOR



SECOND FLOOR

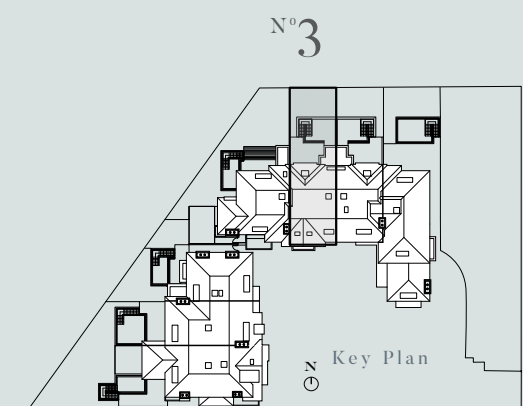


20 SHREWSBURY ROAD | DUBLIN 4 | IRELAND

NUMBER THREE

All images/floorplans used are for illustrative purposes only and are intended to convey the concept and vision for the development.

THE FLOOR PLANS





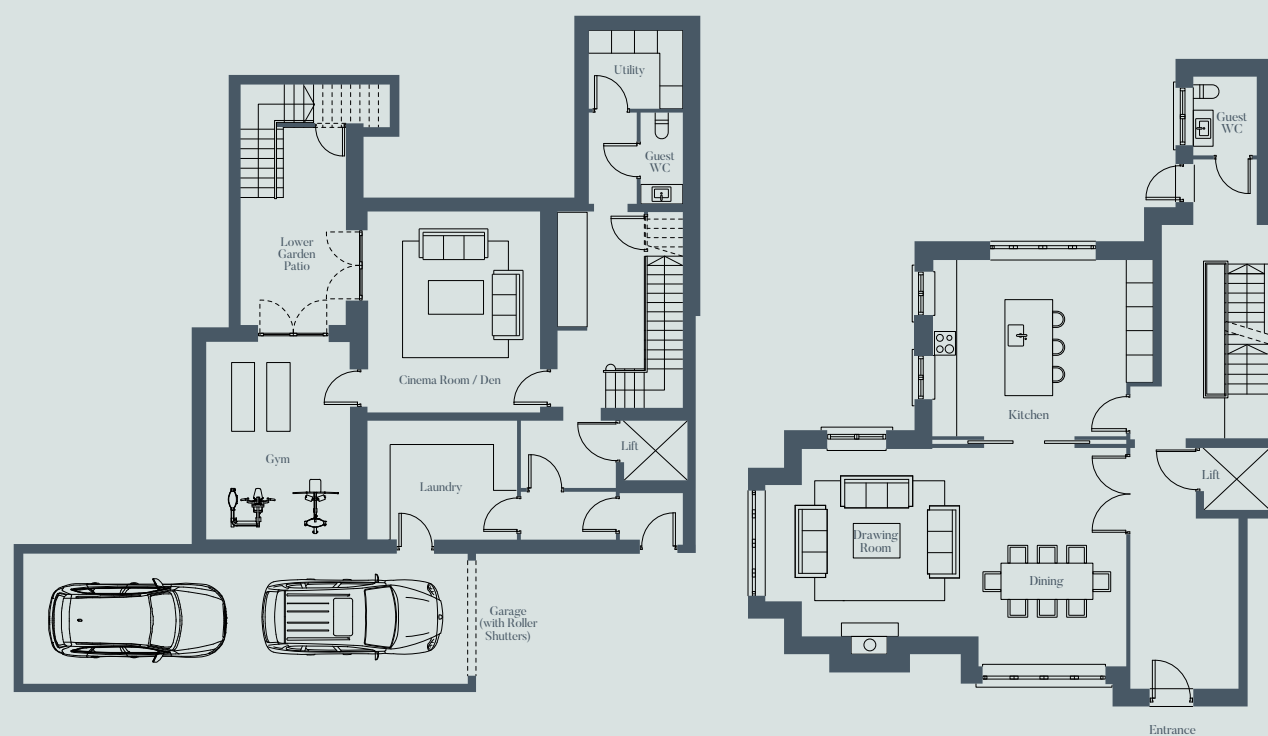
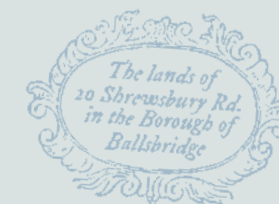
N<sup>o</sup> 4



TOTAL FLOOR AREA

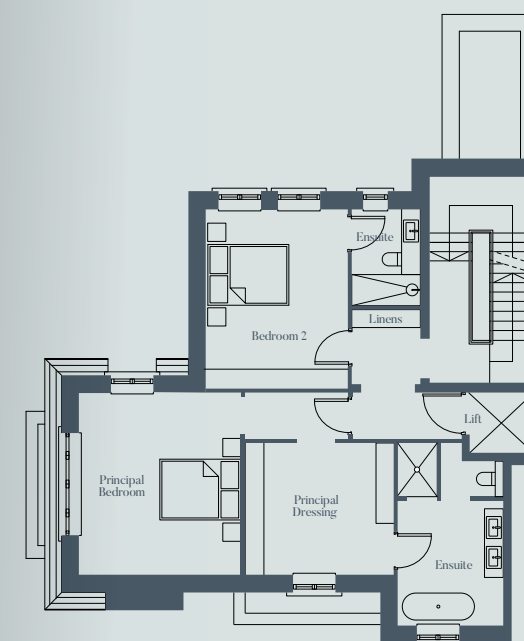
393 sq.m / 4,235 sq.ft\*

(\*size includes garage)

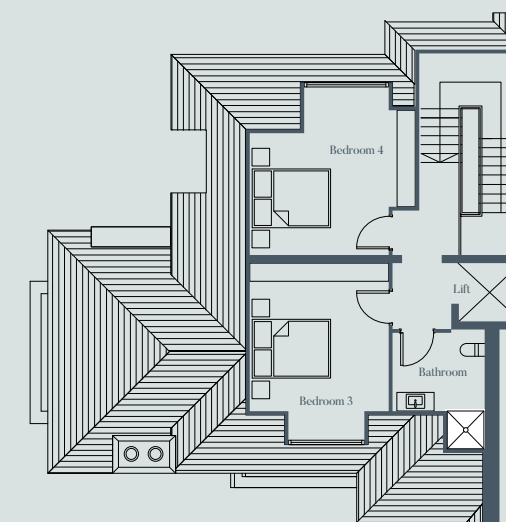


BASEMENT LEVEL

GROUND FLOOR



FIRST FLOOR

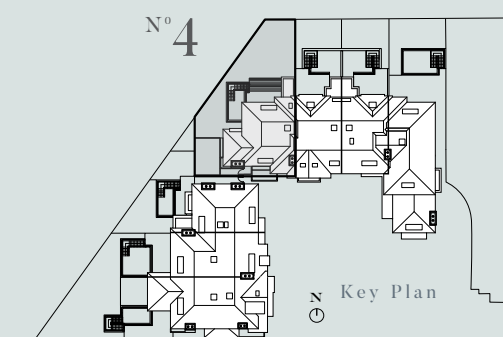


SECOND FLOOR

NUMBER FOUR

All images/floorplans used are for illustrative purposes only and are intended to convey the concept and vision for the development.

THE FLOOR PLANS





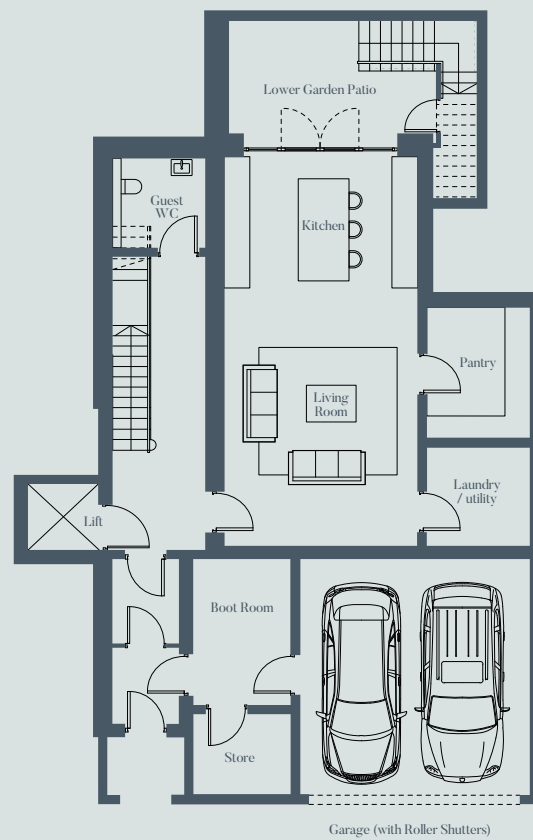
N<sup>o</sup> 5



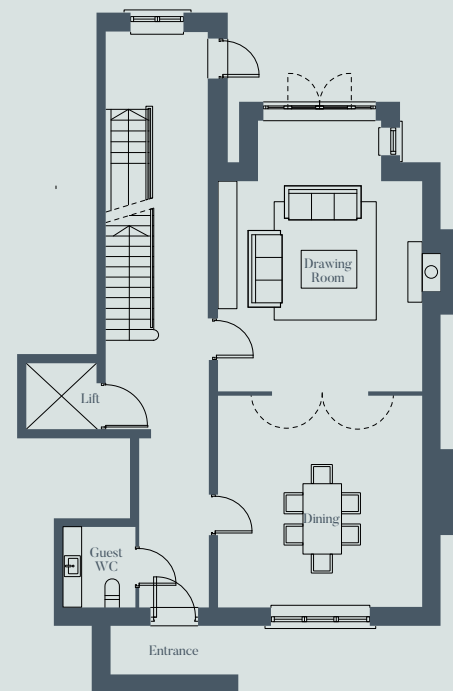
TOTAL FLOOR AREA

354 sq.m / 3,805 sq.ft\*

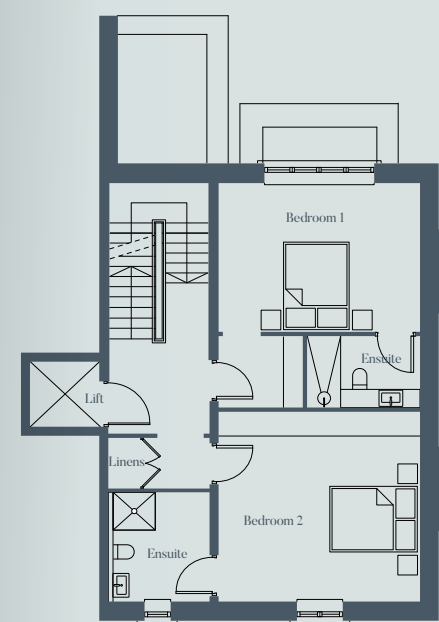
(\*size includes garage)



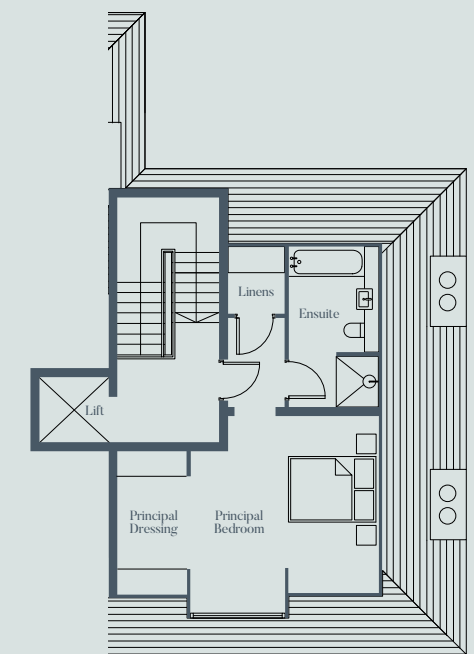
BASEMENT LEVEL



GROUND FLOOR



FIRST FLOOR



SECOND FLOOR

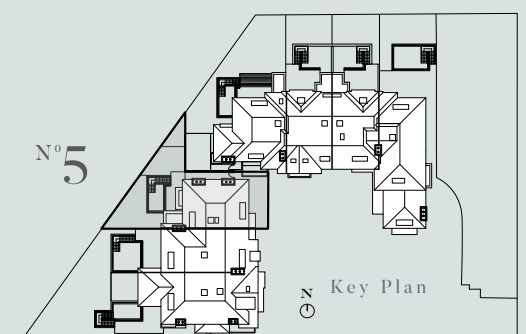


20 SHREWSBURY ROAD | DUBLIN 4 | IRELAND

NUMBER FIVE

All images/floorplans used are for illustrative purposes only and are intended to convey the concept and vision for the development.

THE FLOOR PLANS





Nº 6



TOTAL FLOOR AREA

436 sq.m / 4,695 sq.ft\*

(\*size includes garage)



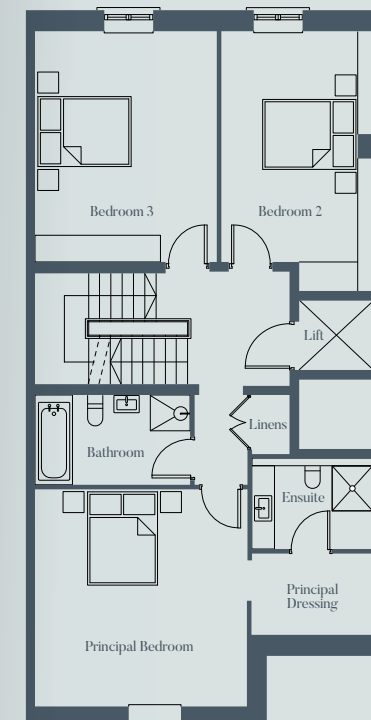
BASEMENT LEVEL

GROUND FLOOR

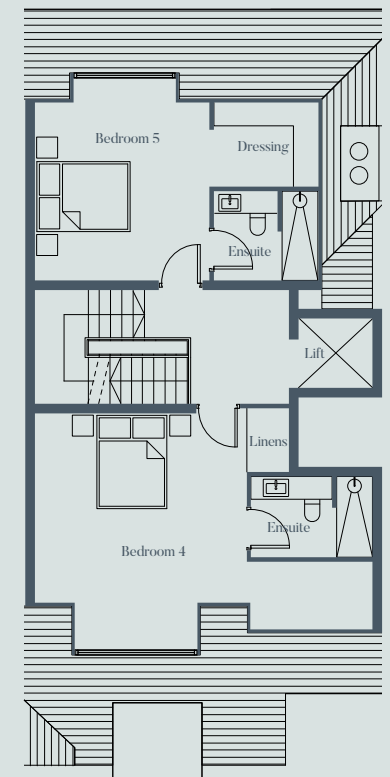
NUMBER SIX

All images/floorplans used are for illustrative purposes only and are intended to convey the concept and vision for the development.

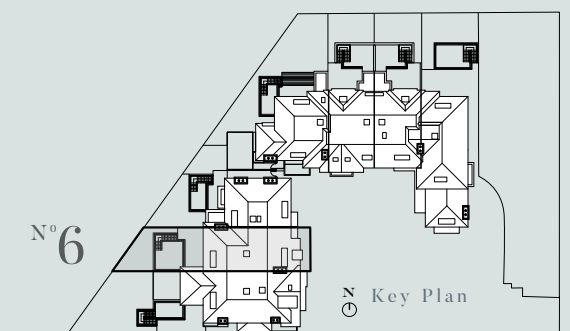
THE FLOOR PLANS



FIRST FLOOR



SECOND FLOOR





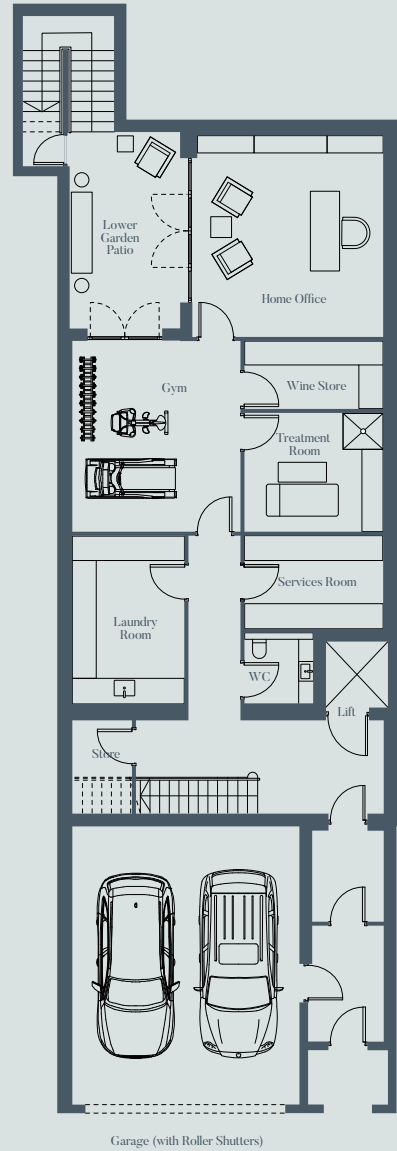
N<sup>o</sup>7



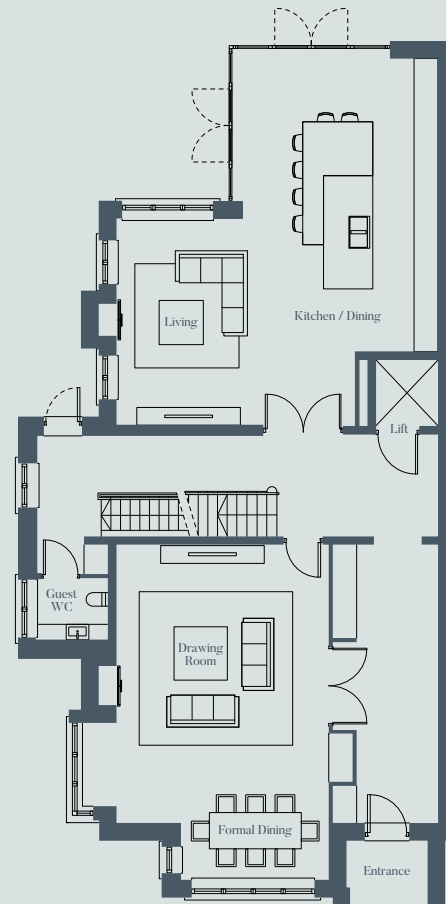
TOTAL FLOOR AREA

565sq.m / 6,078 sq.ft\*

(\*size includes garage)



BASEMENT LEVEL

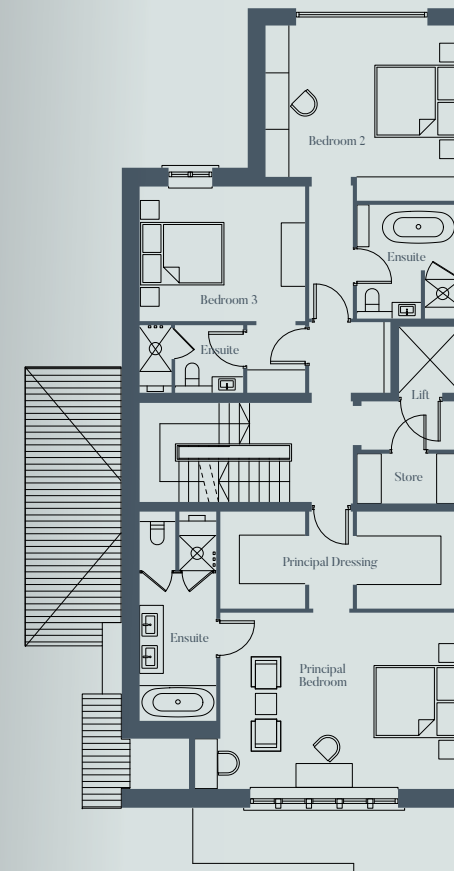


GROUND FLOOR

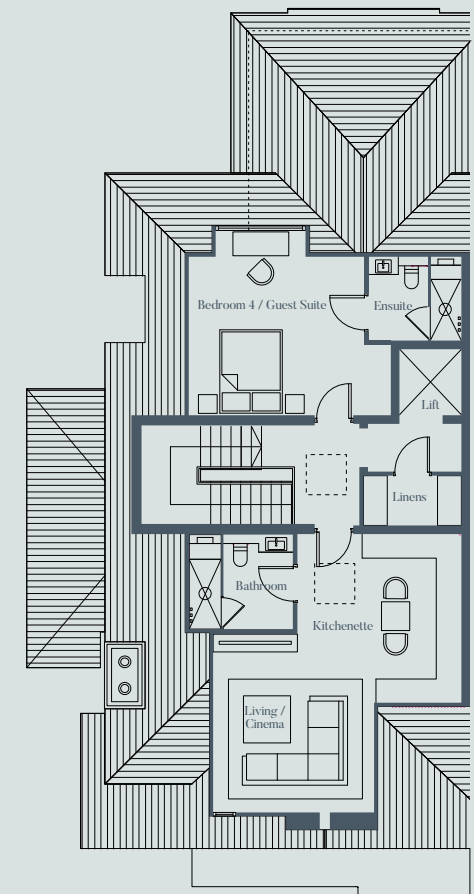
NUMBER SEVEN

All images/floorplans used are for illustrative purposes only and are intended to convey the concept and vision for the development.

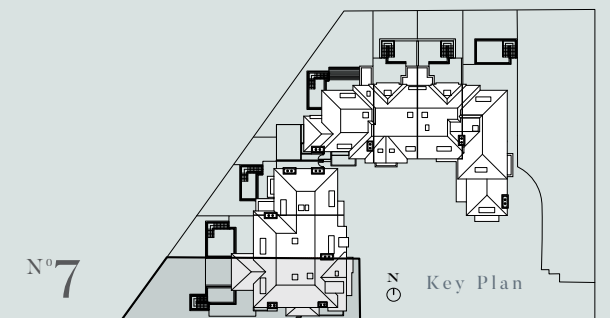
THE FLOOR PLANS



FIRST FLOOR



SECOND FLOOR



N<sup>o</sup>7

Key Plan



## SPECIFICATIONS \*



### Kitchen

- Beautiful bespoke designed and hand-finished kitchens by Rhatigan and Hick
- Composite stone work surface
- Double bowl undermounted sink and polished chrome mixer tap
- Mont Blanc marble feature wall above work surfaces
- Hand-painted finish to cabinets with satin pull handles
- Concealed LED lighting in pantry
- Full suite of high-quality Miele appliances including combi steam oven, single oven, built-in coffee machine, built-in wine cooler, integrated dishwasher, integrated full height fridge/freezer, and induction hob
- Miele induction Hob with integrated downdraft extractor.
- Integrated triple recycling bin
- Customised storage throughout lined in vegan leather



### Laundry Room

- All laundry rooms include Silestone worktops and splashback
- Appliances include freestanding Siemens washer, dryer and dishwasher
- Integrated triple recycling bin
- Matte finish to cabinets by Kube Kitchens



### Lower Ground Floor Powder Room

- Wall hung white WC pan, soft-close seat cover and dual flush concealed cistern
- Freestanding chrome vanity stand with brushed graphite marble vanity top
- Feature marble floor to match vanity unit
- Decorative wall lighting by Drummonds



### Powder Room

- Wall hung white WC pan, soft-close seat cover and dual flush concealed cistern
- Bespoke calacatta italia marble vanity unit with storage,
- Undermounted sink



### Principal En Suite

- Feature double-ended bath surrounded by natural stone
- Walk-in shower area and WC with glass shower panel and door with brushed brass details
- Custom finished tapware throughout by Swadling
- Feature bath tap with hand shower to bath
- Ceiling mounted shower head, separate hand shower and concealed thermostatic mixer to separate shower area
- Bespoke vanity unit with storage, under-mounted basin and brushed brass/chrome detail
- Floor mounted white WC pan, soft-close seat cover and dual flush concealed cistern
- Thermostatic controlled heated towel rail
- Natural stone to shower areas

\* May not apply to every home





## SPECIFICATIONS\*

CONTINUED



### Interior Finishes

- Solid hand painted entrance door with transom window
- M. Marcus Heritage Brass bronze ironmongery throughout
- Painted timber panelled doors to all floors
- Decorative architraves and skirtings throughout, tiled skirtings to wet areas where applicable
- Staircase with bespoke balustrades
- Bespoke fitted wardrobes to each bedroom, internal fittings include rails, shelves and drawers



### Electrical Fittings

- Pre-wired for future pendant over the island in kitchen and wall lighting by customer to hallways, reception rooms and bedrooms
- Dimming lighting to reception rooms
- Switched 5-amp lighting circuit to reception rooms and bedrooms
- Television point to drawing rooms and bedrooms with a data and coaxial cable point all wired back to the comms room
- Telephone and CAT 6 data points provided to reception rooms and all bedrooms
- Sockets with USB points to selected areas



### Heating

- Under-floor heating to all rooms with local temperature control
- Central plant heating individually metered
- Pressurised private main water supply
- Feature gas fireplace in drawing rooms



### Special Features

- Precast concrete floors
- Solid internal walls
- Private lift within each house



### Gardens & Terraces

- Landscaped rear gardens with solid granite paved terrace areas



### Basement Level Garage

- Multi-point locking entrance door to property from garage
- Remote-controlled garage roller shutter door
- Secure underground garage parking
- Sectional doors to garage car parking
- Communal basement cycle area
- Bin storage in basement area

\* May not apply to every home

