

G



BUILDING G

CENTRAL PARK

LEOPARDSTOWN, DUBLIN 18

# AHEAD OF THE CURVE

04

AT A GLANCE

06

LOCATION

08

TRANSPORT

10

CENTRAL PARK  
OVERVIEW

22

THE BUILDING

30

FLOOR PLANS

36

CONTACT

# AT A GLANCE

## BUILDING G, CENTRAL PARK

Floors 5, 6 & 7 available immediately

### 6TH FLOOR

Office  
26,085 sq.ft | 2,424 sq.m

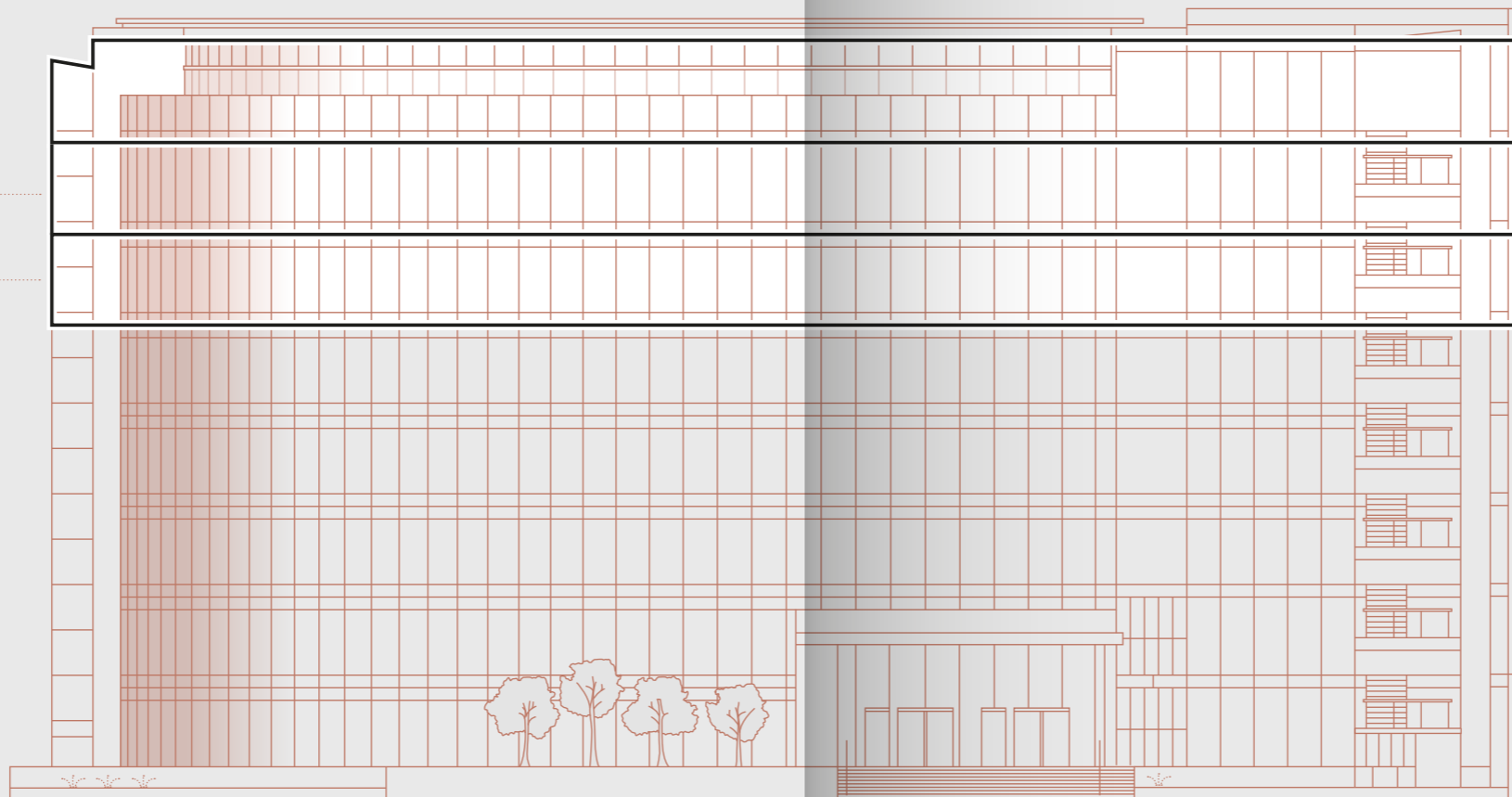
### 5TH FLOOR

Office  
26,081 sq.ft | 2,423 sq.m

### 7TH FLOOR

Office  
23,887 sq.ft | 2,219 sq.m

Terrace  
1,425 sq.ft | 132 sq.m



Salesforce

Salesforce

MarketStar

Sage

Mainstream Renewable Power



#### BETTER THAN EVER

Extensive upgrade to Building G's office space, common areas and atrium



#### PREMIUM LOCATION

Central Park is one of Dublin's most prestigious office & residential campuses



#### HIGH CONNECTIVITY

Adjacent to the M50 motorway, with a dedicated Green Line Luas Light Rail station, bus stops and ample underground car parking.



#### EXCELLENT AMENITIES

On-site and nearby amenities include restaurants, cafes, shopping centres, golf courses, childcare and more



#### A VIBRANT COMMUNITY

Placemaking initiatives combined with Central Park's 'Live Work Grow' programme create a sense of community for occupiers

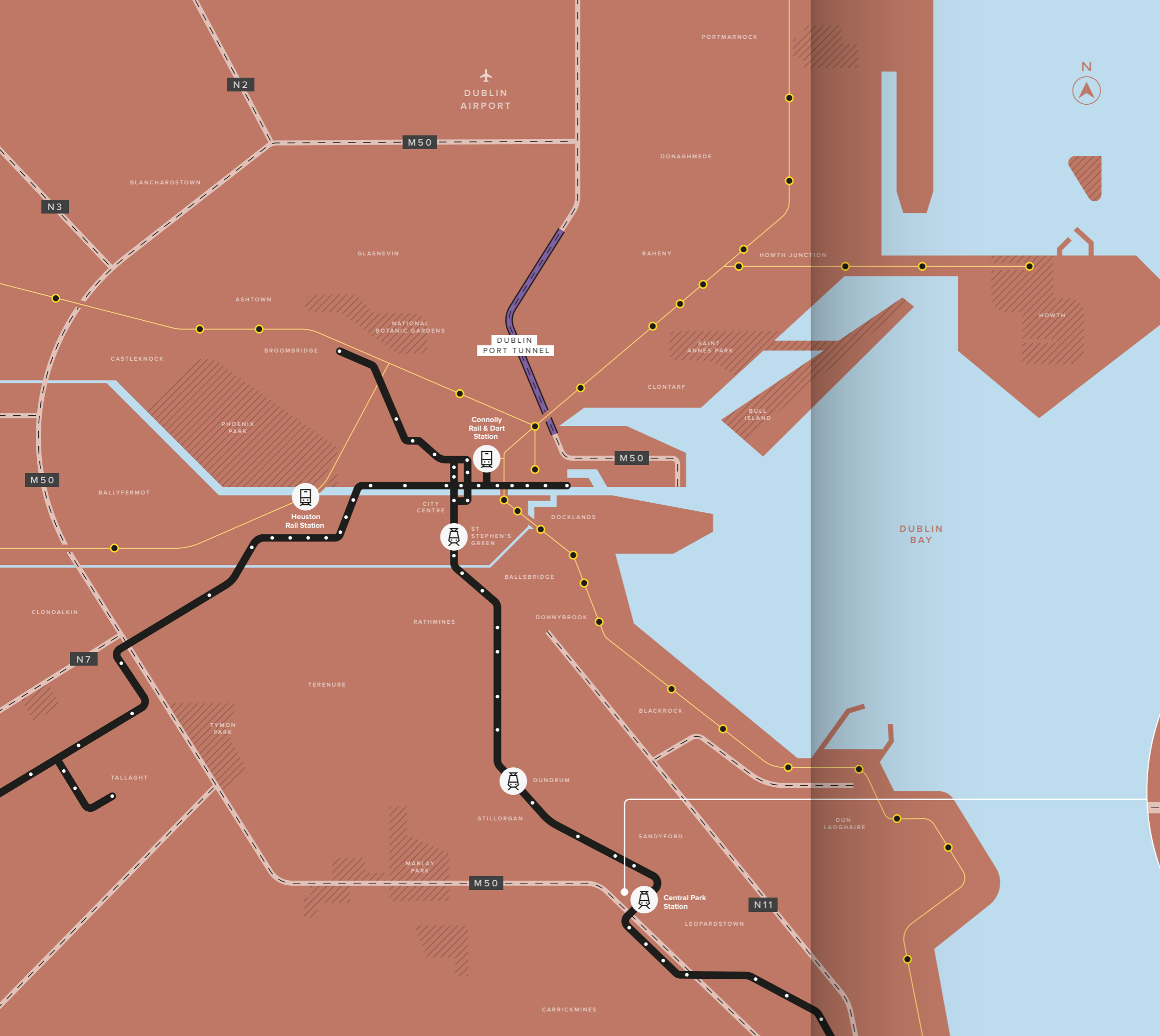
# THE LOCATION

## Central Park, Leopardstown

Central Park is located approximately 10 km south of Dublin City Centre, situated on the foothills of the Dublin Mountains. Central Park can be easily accessed from all parts of Dublin, including the nearby commuter counties (Meath, Kildare, Wicklow) via the M50 Motorway.

The Central Park Campus is arguably one of the best connected office developments in Dublin. The M50 Motorway provides rapid vehicular access directly to Dublin Airport. In addition, occupiers can avail of the Green Line Luas, connecting them to Dundrum Town Centre and Dublin City Centre.





# TRANSPORT

Central Park is the most accessible suburban office campus in Dublin and is served by all major transport links. Central Park also has its own dedicated Luas stop.



**Car**  
Adjacent to the M50 & N11



**Luas Light Rail**  
Dedicated stop on-site (Green Line)



**Bus**

**Shuttle Bus:** private shuttle bus on-site serves City Centre & DART Station

**Aircoach:** dedicated stop on-site, departures every 10 minutes

**Dublin Bus:** stops at the park providing access to the city centre



**Map Legend**



Key Train Stations



Key Luas Stations



Luas Light Rail



Irish Rail



Motorways



Dublin Port Tunnel



Dublin Airport

**Luas Travel Times**



Cherrywood  
14 mins



Carrickmines  
10 mins



Central Park



Sandyford  
3 mins

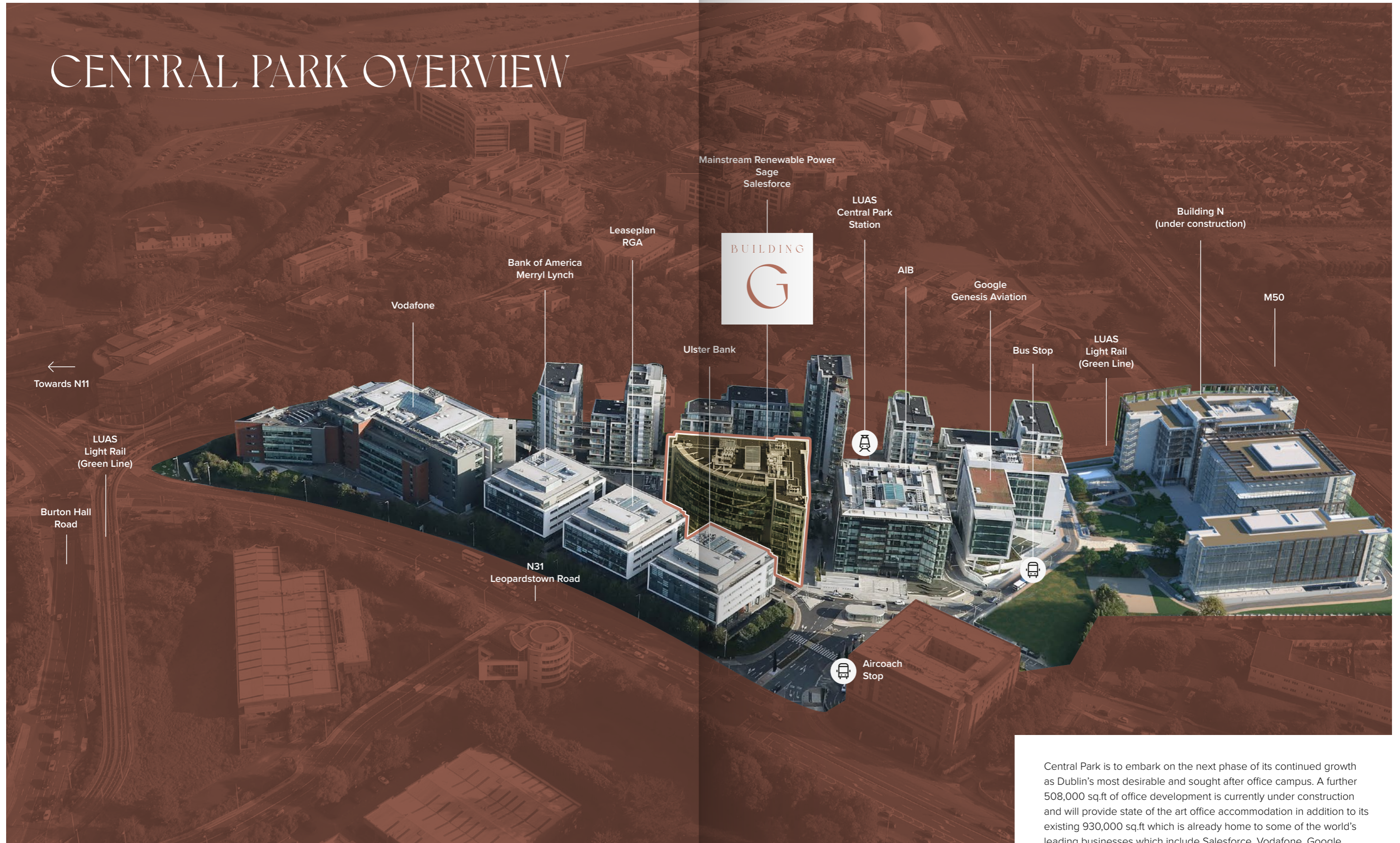


Dundrum Town Centre  
10 mins



St. Stephen's Green  
25 mins

# CENTRAL PARK OVERVIEW



Central Park is to embark on the next phase of its continued growth as Dublin's most desirable and sought after office campus. A further 508,000 sq.ft of office development is currently under construction and will provide state of the art office accommodation in addition to its existing 930,000 sq.ft which is already home to some of the world's leading businesses which include Salesforce, Vodafone, Google, Ulster Bank, Bank of America ML, Sage and AIB.

The quality of office accommodation in Central Park is widely acknowledged as "best in class", evidenced by the high quality occupiers already located here.

**Central Park  
is more than just  
a place to work**

The campus provides the perfect balance between work and social lifestyles. The campus includes a mix of residential apartments and office accommodation. The residential component gives the campus a constant level of activity coming to and from Central Park, providing a vibrant and lively campus for all occupiers.







## Placemaking

Central Park is committed to creating an attractive and sustainable environment to work and live in. In 2015, the Live Work Grow (LWG) programme was introduced to Central Park, with the sole purpose of transforming the Park's professional work environment into a warm and welcoming community. The programme has helped people working in Central Park to connect, grow and make the most of their time here.

This has been achieved through professionally designed landscaping, seating, signage and a sculpture specially made for the plaza which are all incorporated with the events held on site.

The Metropolis Sculpture by Rachel Joynt and Remco De Fouw emphasised the importance of a gathering place. The integrated seating provides performance space and areas where people could meet, rest and lunch. At the same time, easily understood and visually attractive signage has also added to the sense of place. The most recent installation of public Wi-Fi available outdoors provides yet another incentive to spend more time outdoors, further promoting wellness for all tenants.





A SUBSTANTIAL INVESTMENT WAS  
MADE TO CREATE AN ATTRACTIVE  
AND SUSTAINABLE ENVIRONMENT  
TO WORK AND LIVE IN.



Local Amenities

Central Park is well served by retail and leisure facilities with numerous amenities located in the park and also in the surrounding areas, including:

- Clayton Hotel
- Baan Thai Restaurant
- Munchies Sandwich Bar
- Centra Convenience Store
- Art of Coffee
- Freshii
- Simply Beauty
- Westwood Leisure Centre
- Leopardstown Racecourse and Golf Course
- Foxrock Golf Club
- Dundrum Town Centre
- Beacon South Quarter
- Dunnes Stores



Live Work Grow

Live Work Grow is an initiative unique to Dublin's leading suburban office scheme, providing a host of amenities and services to those who are both working and living within Central Park, creating a sense of community within the park. These amenities range from on-site Pilates classes and fitness camps, to a concierge offering services such as drop-off dry cleaning. Live Work Grow provides a base of interaction between all those whom Central Park forms part of their daily life.

More information on [liveworkgrow.ie](http://liveworkgrow.ie)



freshii

The Art of Coffee

Baan Thai

Centra



OPEN SPACES, LIVE PERFORMANCES, EVENTS AND PUBLIC WI-FI ARE SOME OF THE INITIATIVES THAT ENCOURAGE INTERACTION AMONGST RESIDENTS AND EMPLOYEES IN THE PARK.

# THE BUILDING



# BETTER THAN EVER

**Building G offers three floors of fully upgraded accommodation ranging from 23,887 sq.ft to 76,053 sq.ft.**

Building G is an 8-storey office building extending to approximately 180,000 sq.ft. (G.I.A), occupying a prominent position in Central Park. The building is currently multi-let and is home to well-known occupiers such as Mainstream Renewable Power, MarketStar Europe, Sage and Salesforce.

The top three floors in Building G can provide accommodation from 23,887 sq.ft to 76,053 sq.ft. All three floors have been completely upgraded along with the lift lobbies, reception, toilets and the atrium area.

The building benefits from a unique design with a curved façade, providing occupiers with excellent views. Each floor is designed around the central atrium, keeping occupier wellness and flexibility in mind.





## SAFER & SMARTER

Remodelled reception area creates a strong first impression, with a mix of modern and contemporary style finishes that set the tone for the rest of Building G. New high-speed entrance gates with key card access included.



# SOPHISTICATION & COMFORT

at the new ground floor seating area.





# FLOOR PLANS

Building G offers three floors of fully upgraded accommodation ranging from 23,887 sq.ft to 76,053 sq.ft.

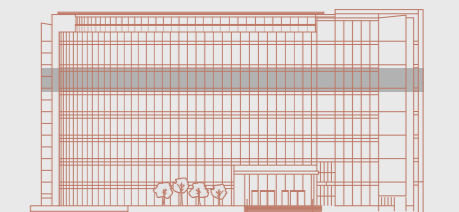
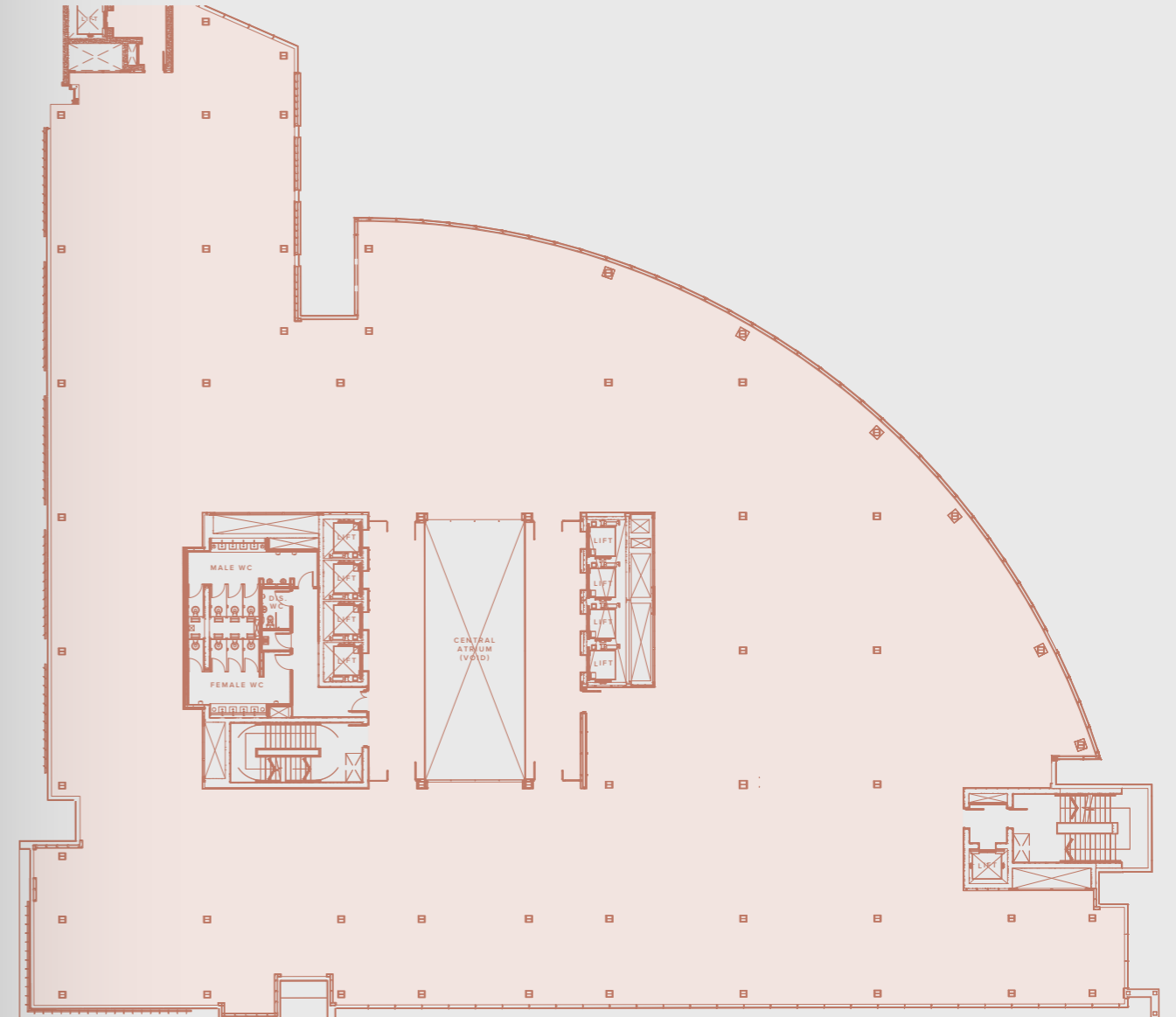
## SCHEDULE OF ACCOMMODATION

5th floor	26,081 sq.ft   2,423 sq.m
6th floor	26,085 sq.ft   2,424 sq.m
7th floor	23,887 sq.ft (2,219 sq.m) with a terrace area of 1,425 sq.ft (132 sq.m)



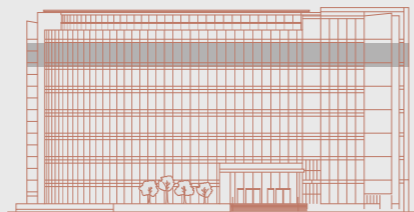
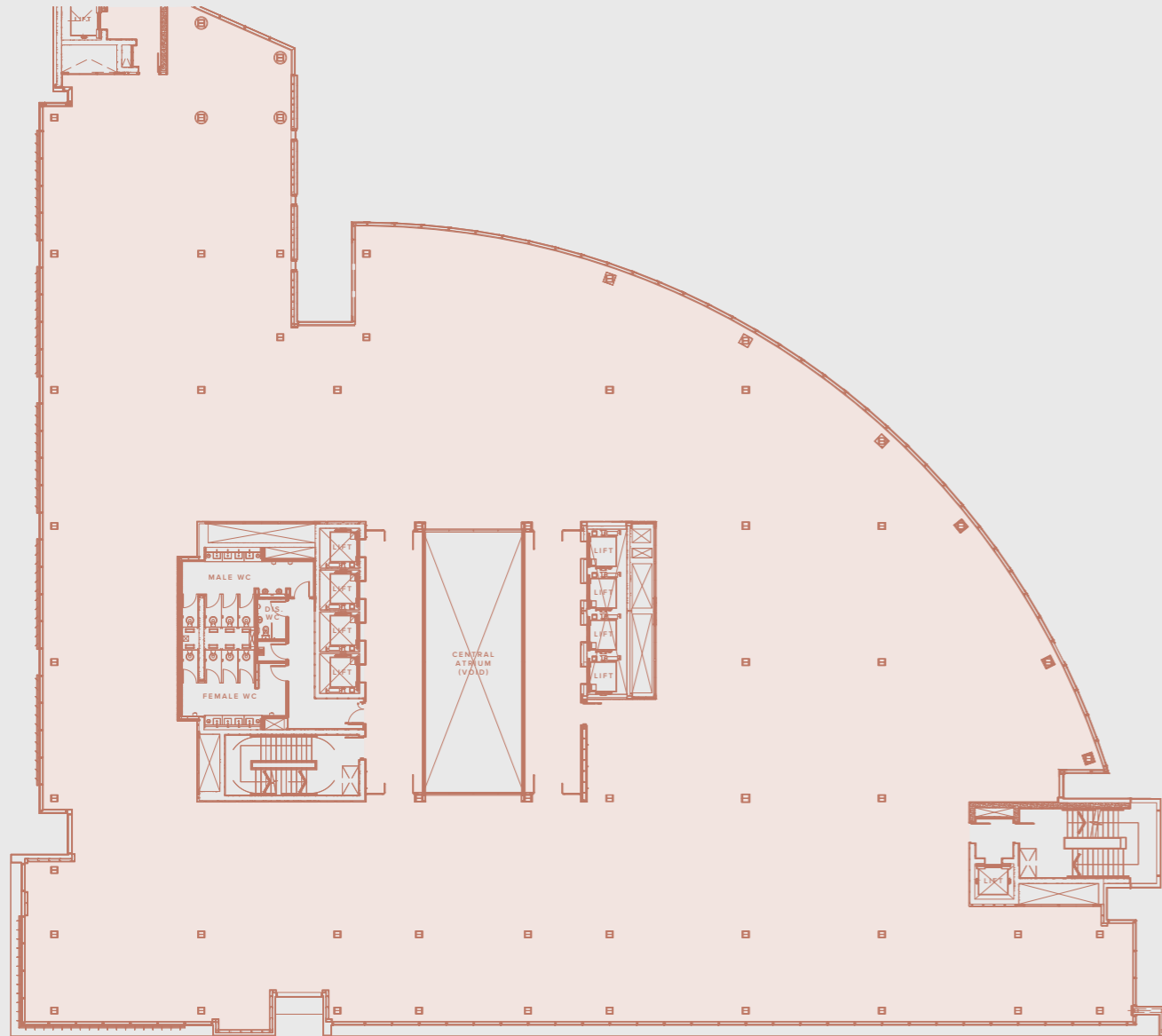
## 5TH FLOOR

26,081 sq.ft | 2,423 sq.m



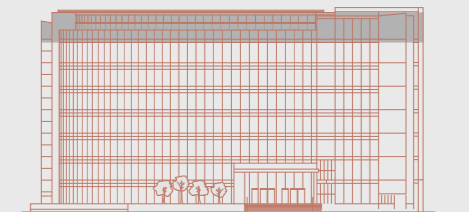
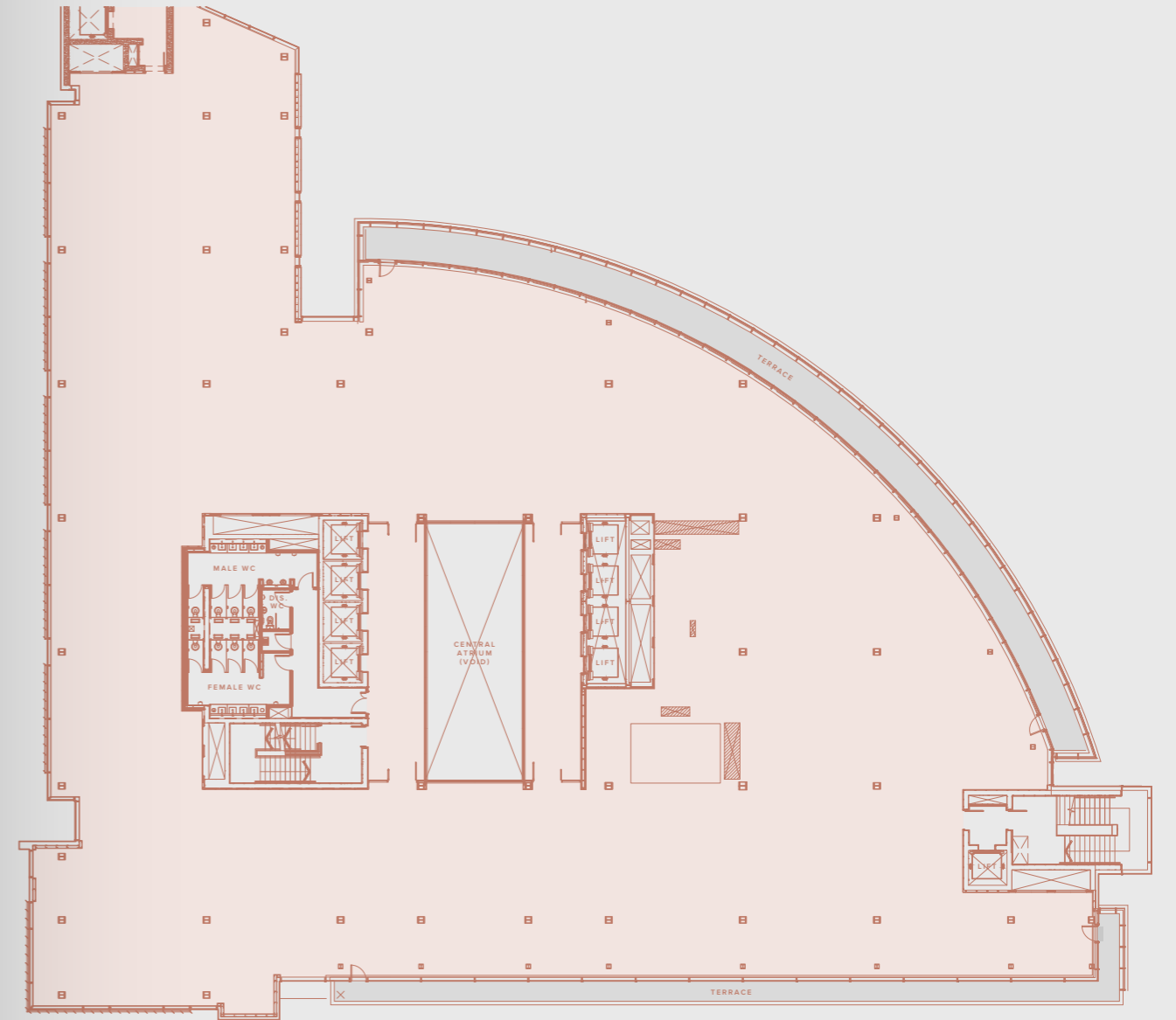
# 6TH FLOOR

26,085 sq.ft. | 2,424 sq.m



# 7TH FLOOR

23,887 sq.ft (2,219 sq.m) with a balcony of 1,425 sq.ft (132 sq.m)







## CONTACT

Viewing strictly by appointment through the joint letting agents.



3rd Floor Connaught House  
1 Burlington Road  
Dublin 4  
+353 1 618 5500  
cbre.ie

Company Licence No. 316570

**Alan Moran**

alan.moran@cbre.com

**Robert Mulcair**

robert.mulcair@cbre.com

20-21 Upper Pembroke Street  
Dublin 2  
+353 1 634 2466  
KnightFrank.ie

Company Licence No. 001266

**Jim O'Reilly**

jim.oreilly@ie.knightfrank.com

**Warren Egan**

warren.egan@ie.knightfrank.com

## ABOUT THE LANDLORD

### HENDERSON PARK

Henderson Park is a pan-European private equity real estate manager with offices in London, Dublin, Luxembourg, Germany and New York. The firm has \$11 billion of real estate assets under management across Europe, with exposure to the gateway and capital cities of the United Kingdom, Ireland, France, Spain, Germany, Greece, Poland and Portugal.

Henderson Park seeks high-quality assets in prime locations where it can identify potential to unlock or create value through asset management. The firm's current portfolio spans over 17 million sq. ft. and is diversified across the office, logistics, multifamily, student housing, hotel and retail sectors, including a number of active development projects. The firm is committed to a substantial capital investment programme at Central Park to sustain and improve the environment for existing and future tenants.

## CENTRAL PARK

[buildingg.centralpark.ie](http://buildingg.centralpark.ie)

Target BER

**Disclaimer:** These particulars are issued by CBRE and Knight Frank on the understanding that all negotiations are conducted through them. Whilst every care has been taken in the preparation of these particulars, they do not constitute an offer or contract. All descriptions, dimensions, references to condition, permissions or licences of use or occupation, access and other details are for guidance only, they are given in good faith and are believed to be correct, and any intending purchaser / tenant should not rely on them as statements or representation of fact but should satisfy themselves (at their own expense) as to the correctness of the information given. Prices are quoted exclusive of VAT (unless otherwise stated) and all negotiations are conducted on the basis that the purchaser / lessee shall be liable for any VAT arising on the transaction. Neither CBRE or Knight Frank nor any of their employees have any authority to make or give any representation or warranty in respect of this property. All Plans are indicative and not to scale.

CENTRAL PARK

[buildingg.centralpark.ie](http://buildingg.centralpark.ie)

---

**CBRE**

 **Knight  
Frank**