

SHORE CLUB

The Penthouses





Elevate your lifestyle with the penthouses at Shore Club, where sophisticated design and meticulous attention to detail enhance every aspect of your daily life.

Shore Club offers an exceptional selection of one and two-bedroom penthouses, each featuring elegant layouts, premium materials and high-quality finishes.

For those in search of additional space, while the building is still under development, prospective buyers have a rare opportunity to adjust their penthouse space. Our alternative floor plan option allows for the creation of larger two or three-bedroom penthouses, ensuring your new home perfectly suits your needs.













1 & 2 Bedroom Penthouse Floor Plans

TYPE C1

1 Bedroom

50.2 SQ M / 540.34 SQ FT

KITCHEN/LIVING
24.03 SQ M

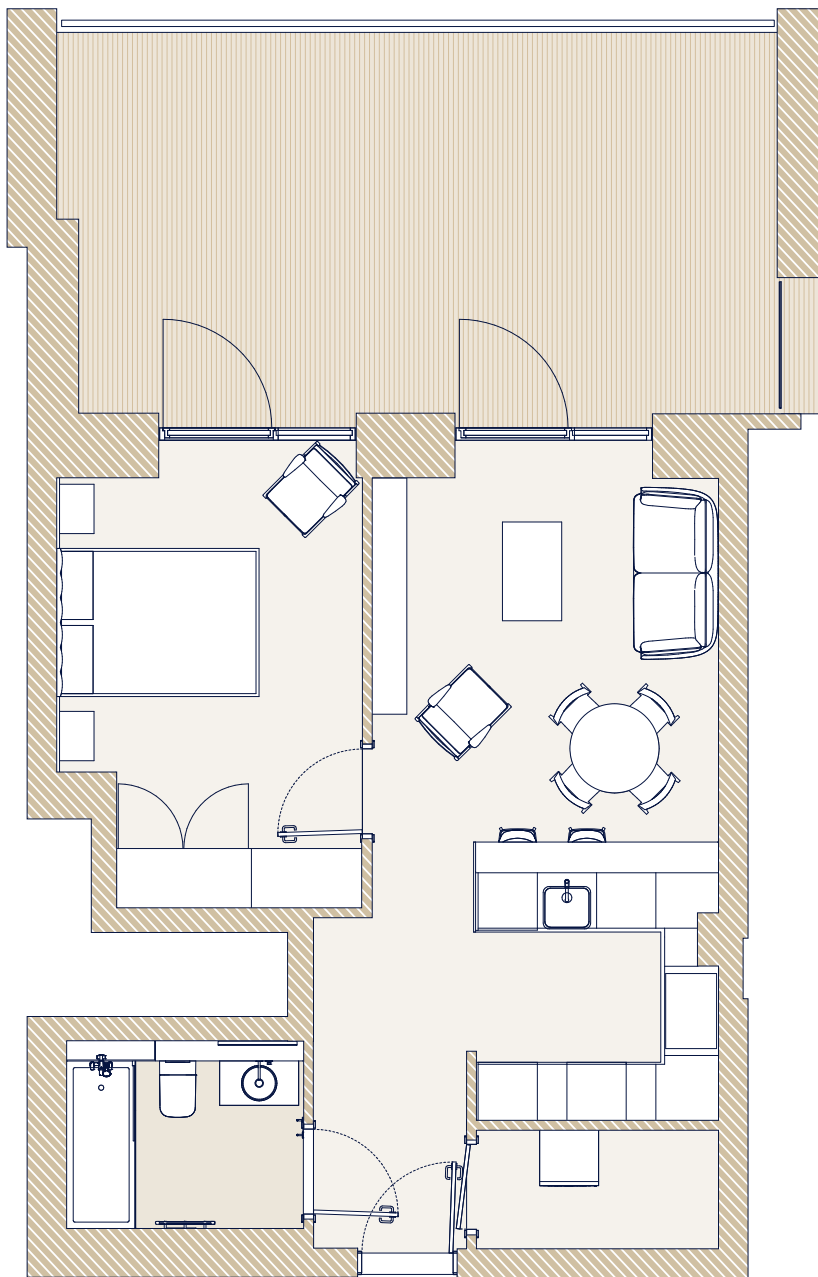
BEDROOM
12.26 SQ M

UTILITY
1.53 SQ M

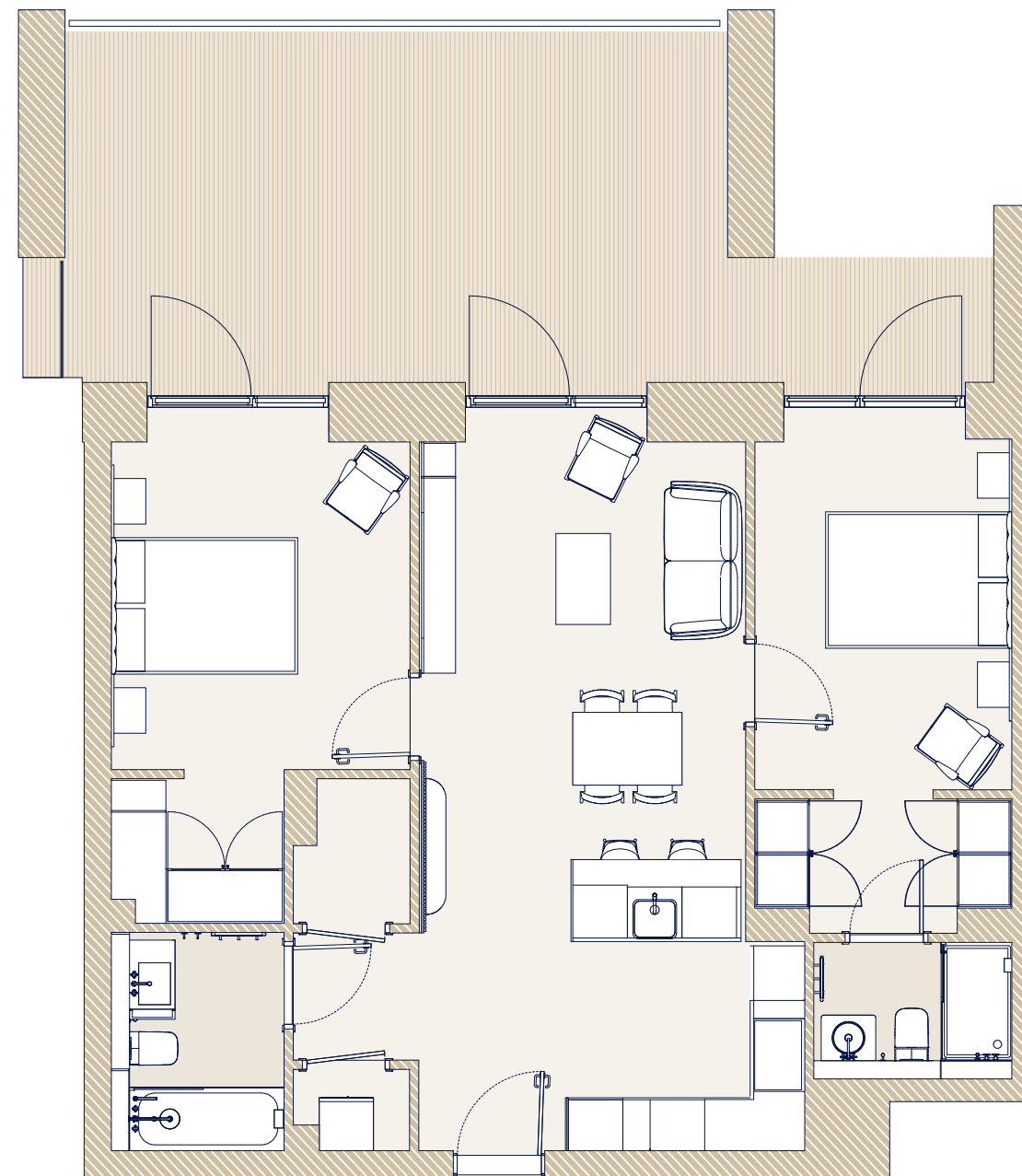
STORAGE
2.43 SQ M

BALCONY
28.58 SQ M

Please note the plans are not to scale and any measurements are indicative only. The developer reserves the right to change and in some cases variations may occur, subject to construction variances and tolerances. Measurements provided are based on Gross Internal Area and exclude balcony/terraced areas.



14



15

TYPE I2

2 Bedroom

78.8 SQ M / 848.19 SQ FT

KITCHEN/LIVING
31.47 SQ M

BEDROOM 1
12.74 SQ M

BEDROOM 2
13.34 SQ M

UTILITY
1.76 SQ M

STORAGE
6.24 SQ M

BALCONY
35.11 SQ M

Please note the plans are not to scale and any measurements are indicative only. The developer reserves the right to change and in some cases variations may occur, subject to construction variances and tolerances. Measurements provided are based on Gross Internal Area and exclude balcony/terraced areas.

TYPE J2

2 Bedroom

99.7 SQ M / 1073.16 SQ FT

KITCHEN/LIVING
44.69 SQ M

BEDROOM 1
12.85 SQ M

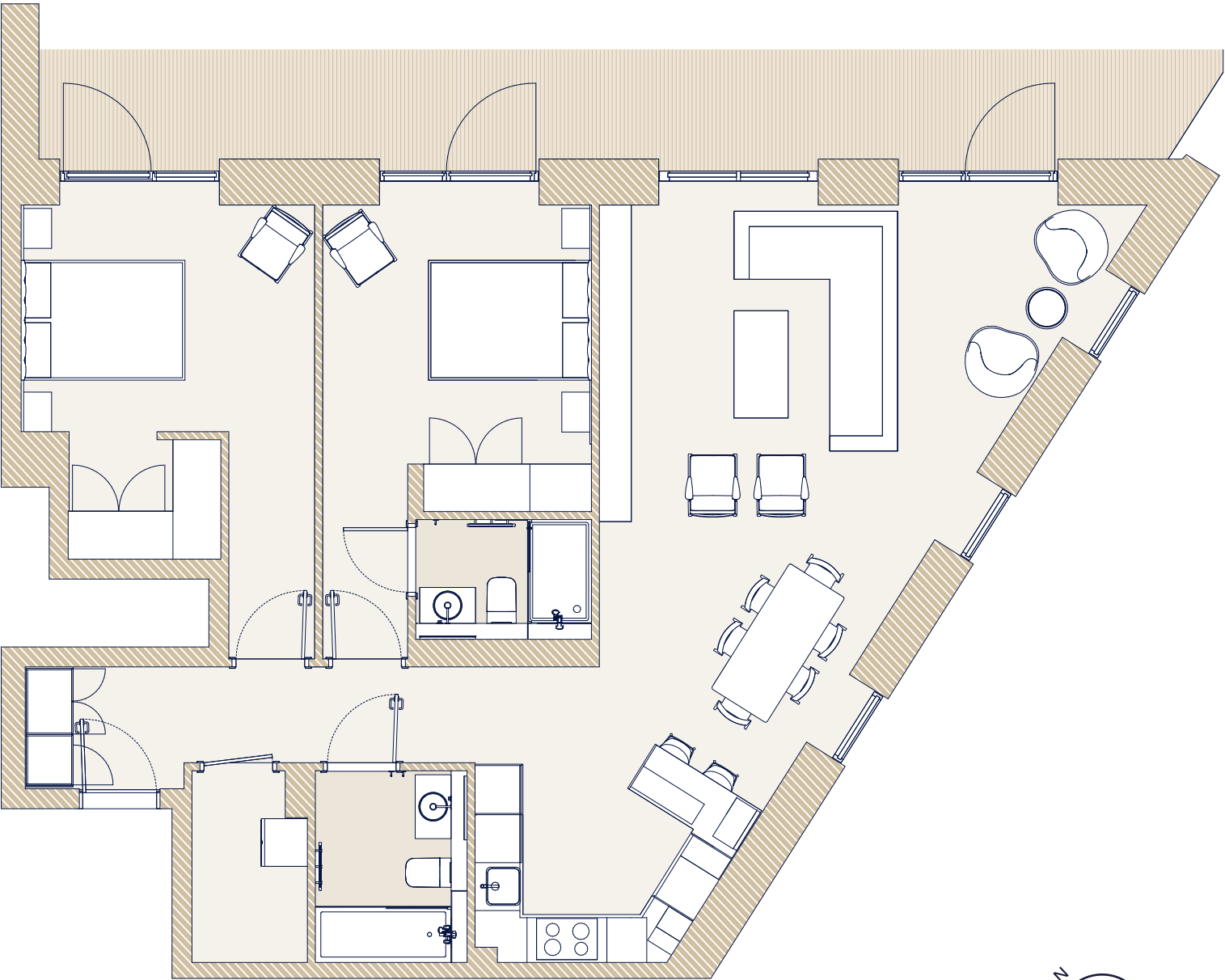
BEDROOM 2
14.41 SQ M

UTILITY
3.29 SQ M

STORAGE
5.14 SQ M

BALCONY
23.18 SQ M

Please note the plans are not to scale and any measurements are indicative only. The developer reserves the right to change and in some cases variations may occur, subject to construction variances and tolerances. Measurements provided are based on Gross Internal Area and exclude balcony/terraced areas.



TYPE K1

1 Bedroom

56.5 SQ M / 608.16 SQ FT

KITCHEN/LIVING
24.78 SQ M

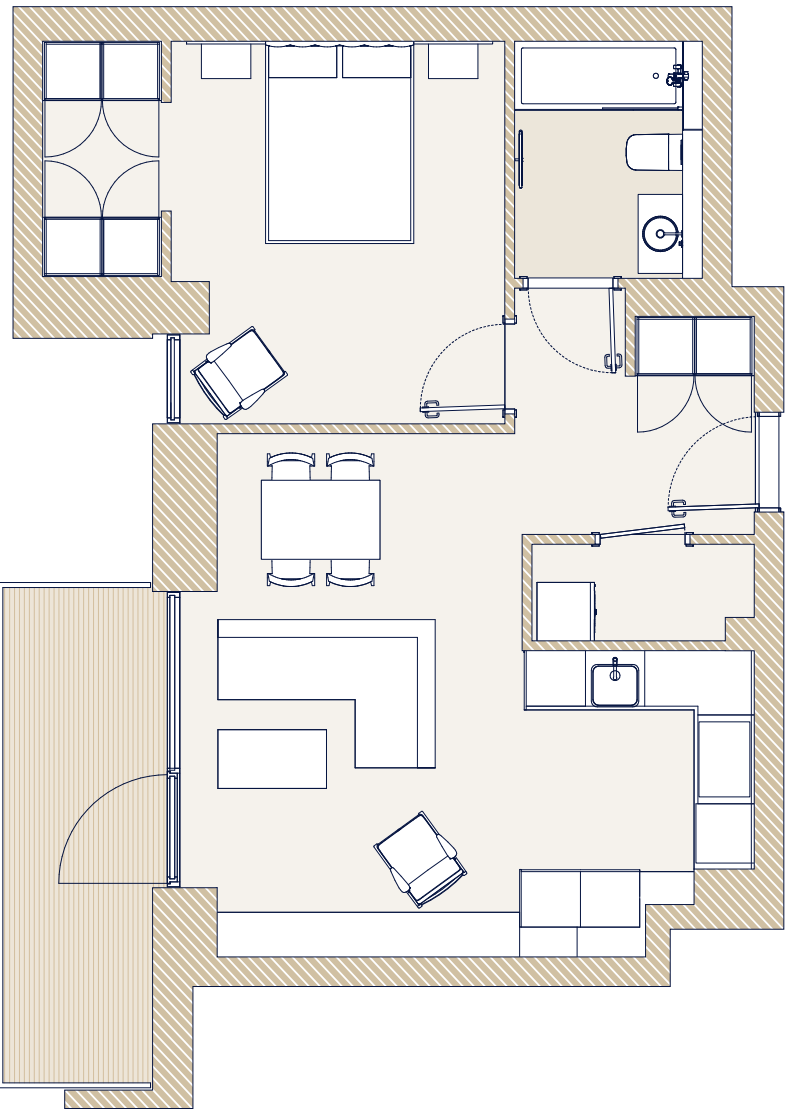
BEDROOM
15.28 SQ M

UTILITY
1.04 SQ M

STORAGE
3.77 SQ M

BALCONY
7.26 SQ M

Please note the plans are not to scale and any measurements are indicative only. The developer reserves the right to change and in some cases variations may occur, subject to construction variances and tolerances. Measurements provided are based on Gross Internal Area and exclude balcony/terraced areas.



TYPE K2

2 Bedroom

80.2 SQ M / 863.26 SQ FT

KITCHEN/LIVING
30.93 SQ M

BEDROOM 1
15.32 SQ M

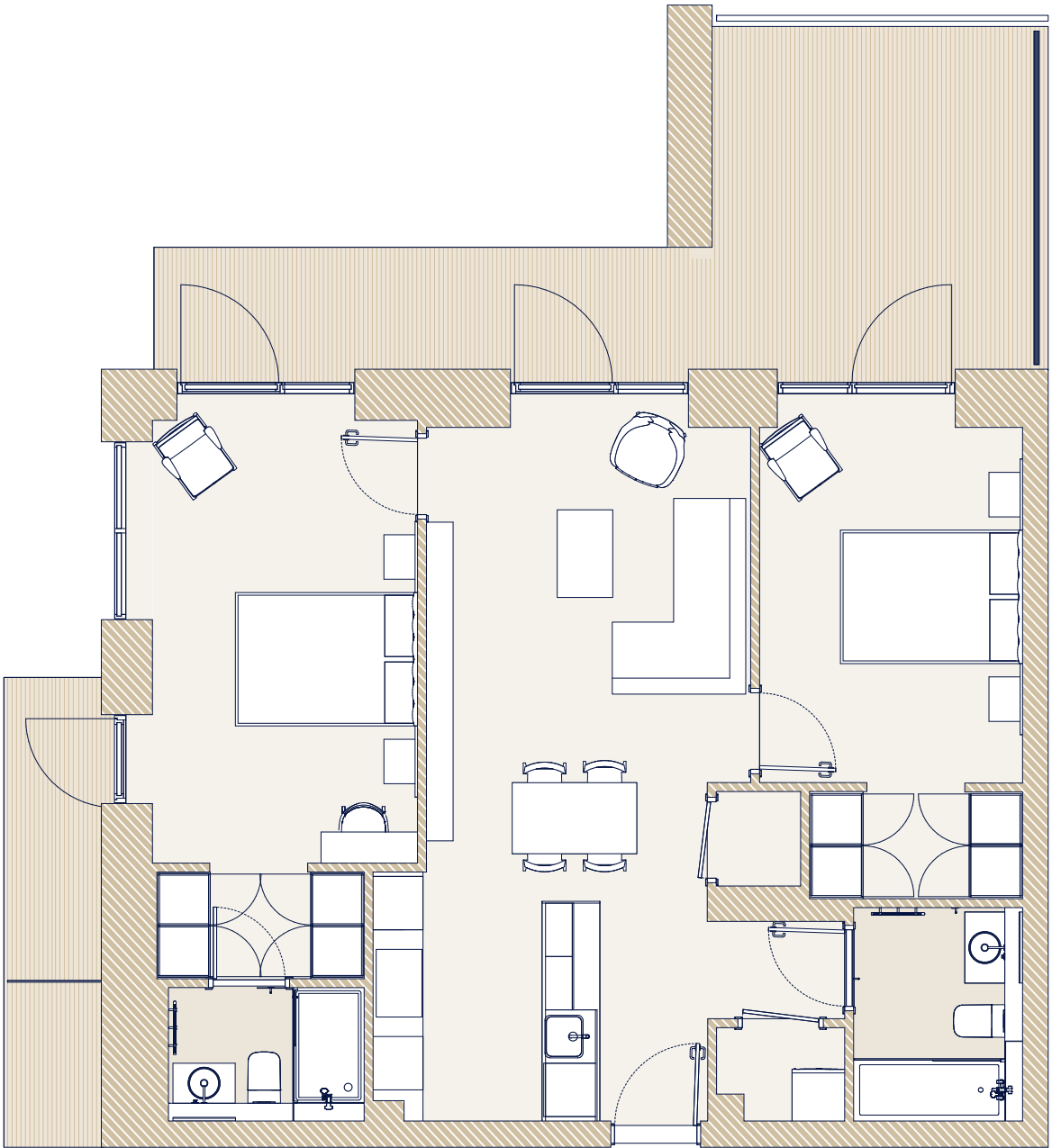
BEDROOM 2
13 SQ M

UTILITY
1.5 SQ M

STORAGE
6.42 SQ M

BALCONY
28.58 SQ M

Please note the plans are not to scale and any measurements are indicative only. The developer reserves the right to change and in some cases variations may occur, subject to construction variances and tolerances. Measurements provided are based on Gross Internal Area and exclude balcony/terraced areas.



TYPE L1

1 Bedroom

53.8 SQ M / 579.09 SQ FT

KITCHEN/LIVING
24.67 SQ M

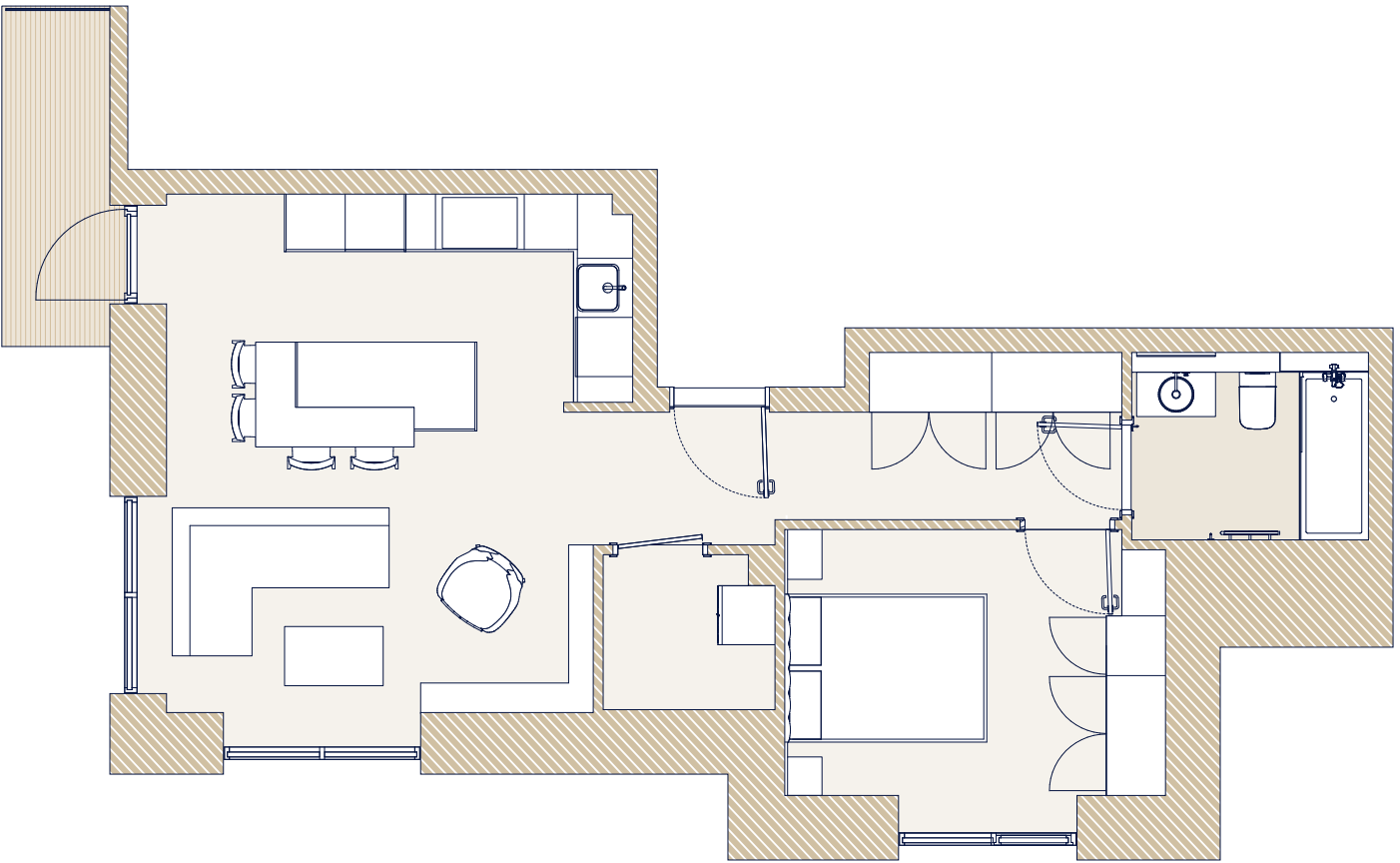
BEDROOM
12.06 SQ M

UTILITY
2.57 SQ M

STORAGE
4.78 SQ M

BALCONY
4.46 SQ M

Please note the plans are not to scale and any measurements are indicative only. The developer reserves the right to change and in some cases variations may occur, subject to construction variances and tolerances. Measurements provided are based on Gross Internal Area and exclude balcony/terraced areas.



TYPE M1

1 Bedroom

53.7 SQ M / 578.02 SQ FT

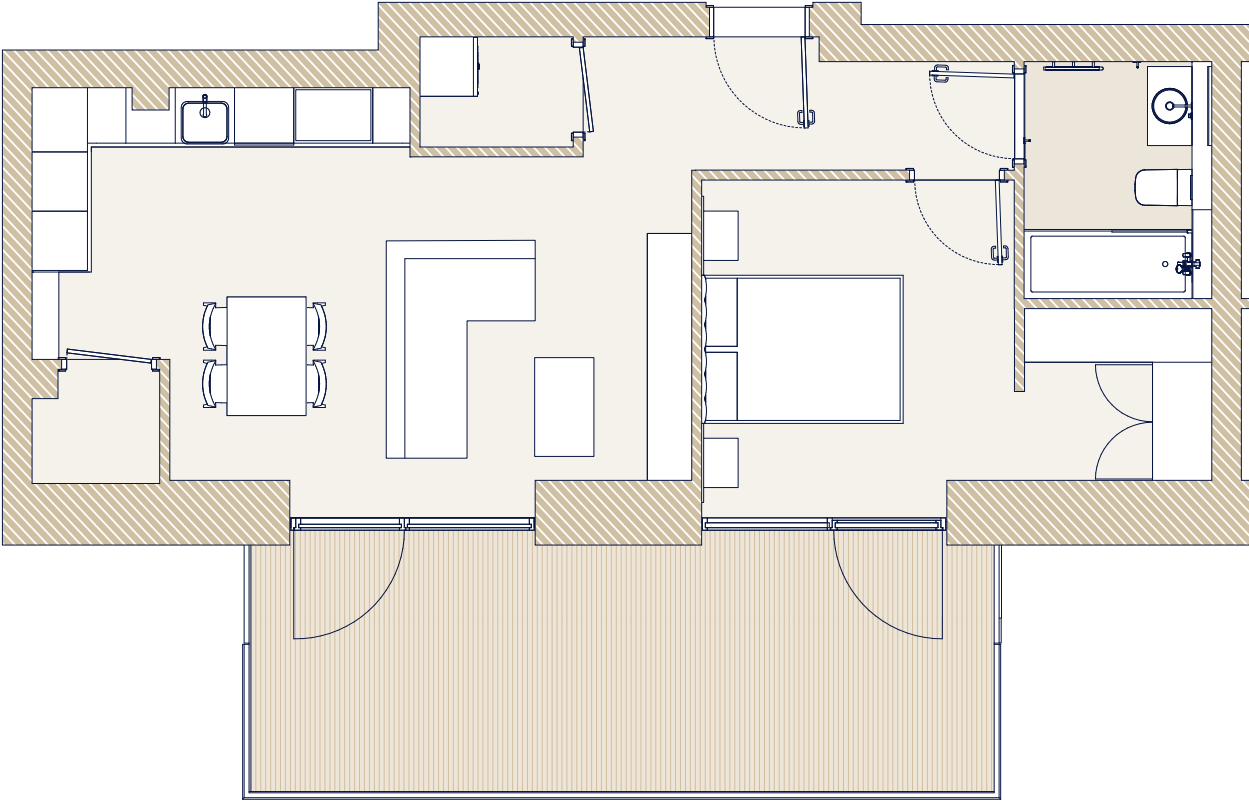
KITCHEN/LIVING
24.65 SQ M

BEDROOM
11.47 SQ M

UTILITY
1.87 SQ M

STORAGE
1.92 SQ M

BALCONY
18.18 SQ M



TYPE M2

2 Bedroom

83.5 SQ M / 898.78 SQ FT

KITCHEN/LIVING
30.18 SQ M

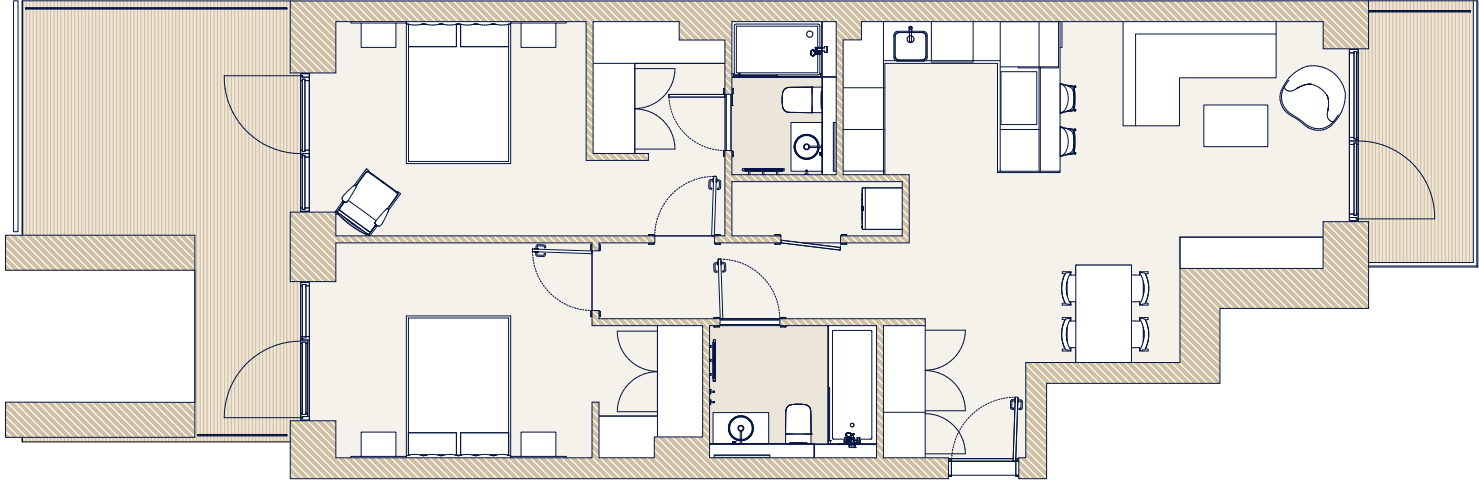
BEDROOM 1
15.12 SQ M

BEDROOM 2
12.98 SQ M

UTILITY
0.86 SQ M

STORAGE
7.41 SQ M

BALCONY
22.8 SQ M



Please note the plans are not to scale and any measurements are indicative only. The developer reserves the right to change and in some cases variations may occur, subject to construction variances and tolerances. Measurements provided are based on Gross Internal Area and exclude balcony/terraced areas.

Please note the plans are not to scale and any measurements are indicative only. The developer reserves the right to change and in some cases variations may occur, subject to construction variances and tolerances. Measurements provided are based on Gross Internal Area and exclude balcony/terraced areas.

TYPE M2A

2 Bedroom

84.3 SQ M / 907.39 SQ FT

KITCHEN/LIVING
31.01 SQ M

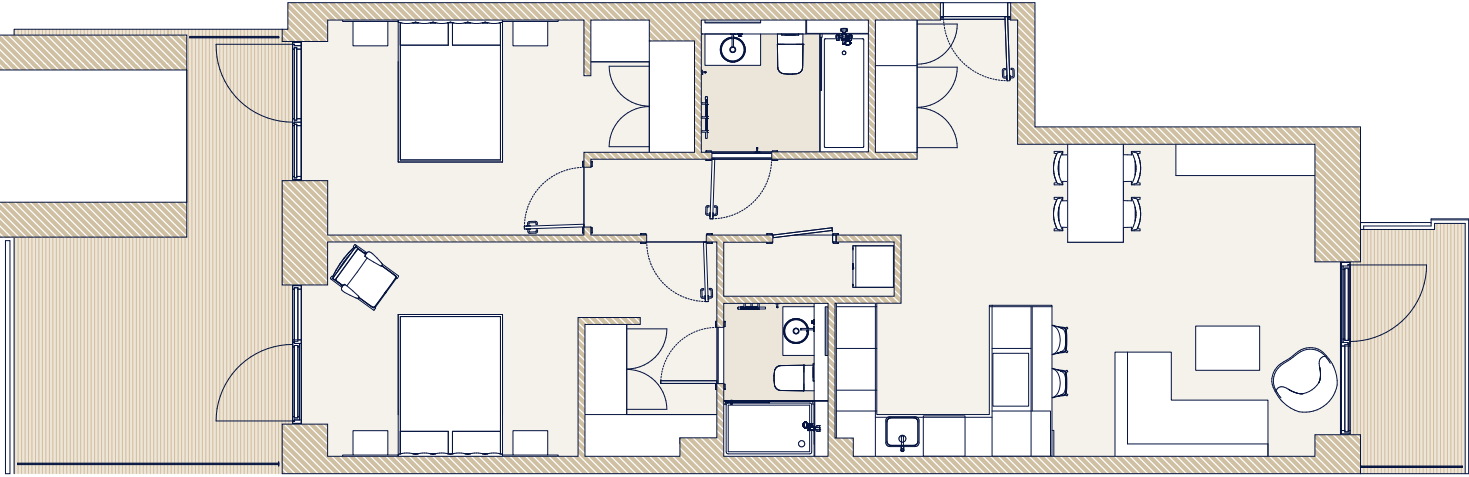
BEDROOM 1
14.81 SQ M

BEDROOM 2
12.92 SQ M

UTILITY
0.86 SQ M

STORAGE
7.41 SQ M

BALCONY
23.43 SQ M



Please note the plans are not to scale and any measurements are indicative only. The developer reserves the right to change and in some cases variations may occur, subject to construction variances and tolerances. Measurements provided are based on Gross Internal Area and exclude balcony/terraced areas.

TYPE N1

1 Bedroom

49.8 SQ M / 536.04 SQ FT

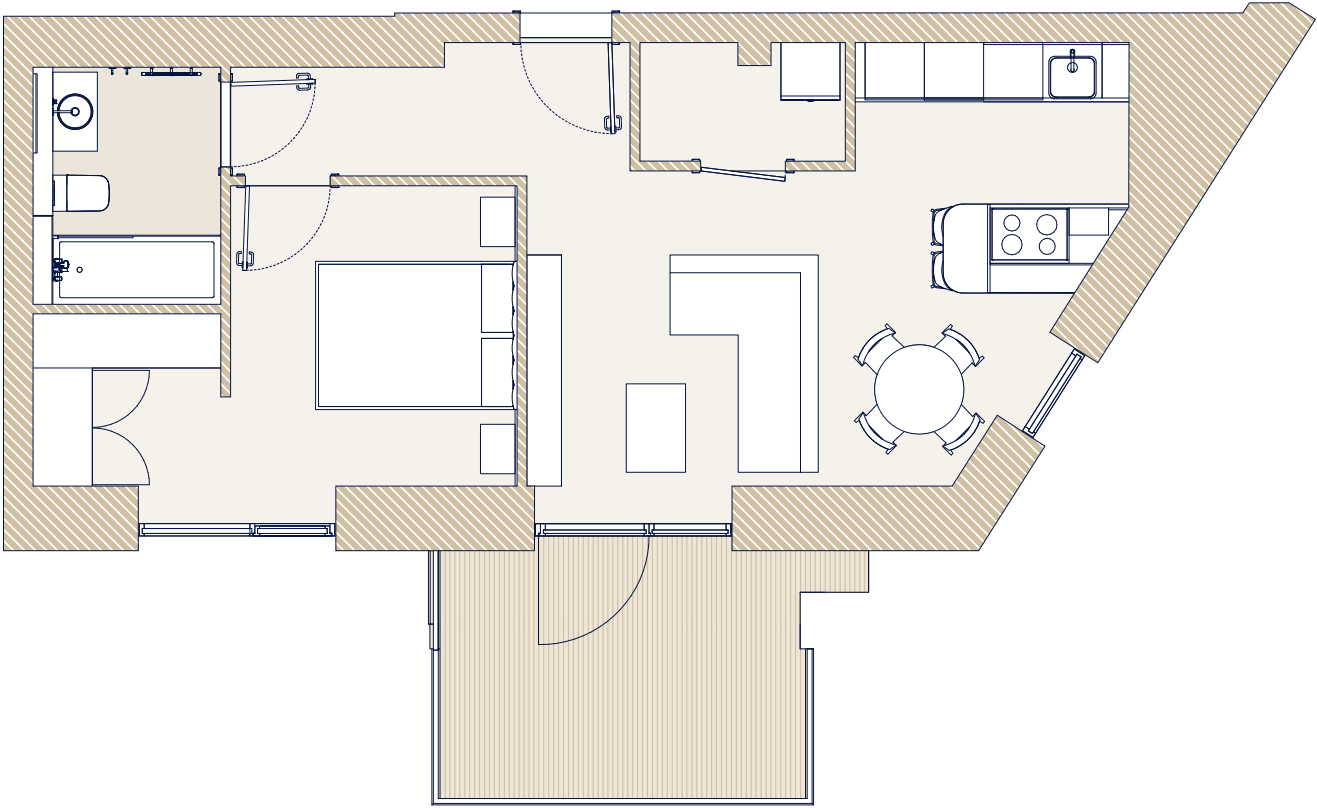
KITCHEN/LIVING
23.91 SQ M

BEDROOM
11.41 SQ M

UTILITY
1.76 SQ M

STORAGE
2.04 SQ M

BALCONY
8.92 SQ M



Please note the plans are not to scale and any measurements are indicative only. The developer reserves the right to change and in some cases variations may occur, subject to construction variances and tolerances. Measurements provided are based on Gross Internal Area and exclude balcony/terraced areas.

TYPE N2

2 Bedroom

79.3 SQ M / 853.57 SQ FT

KITCHEN/LIVING
29.86 SQ M

BEDROOM 1
13.7 SQ M

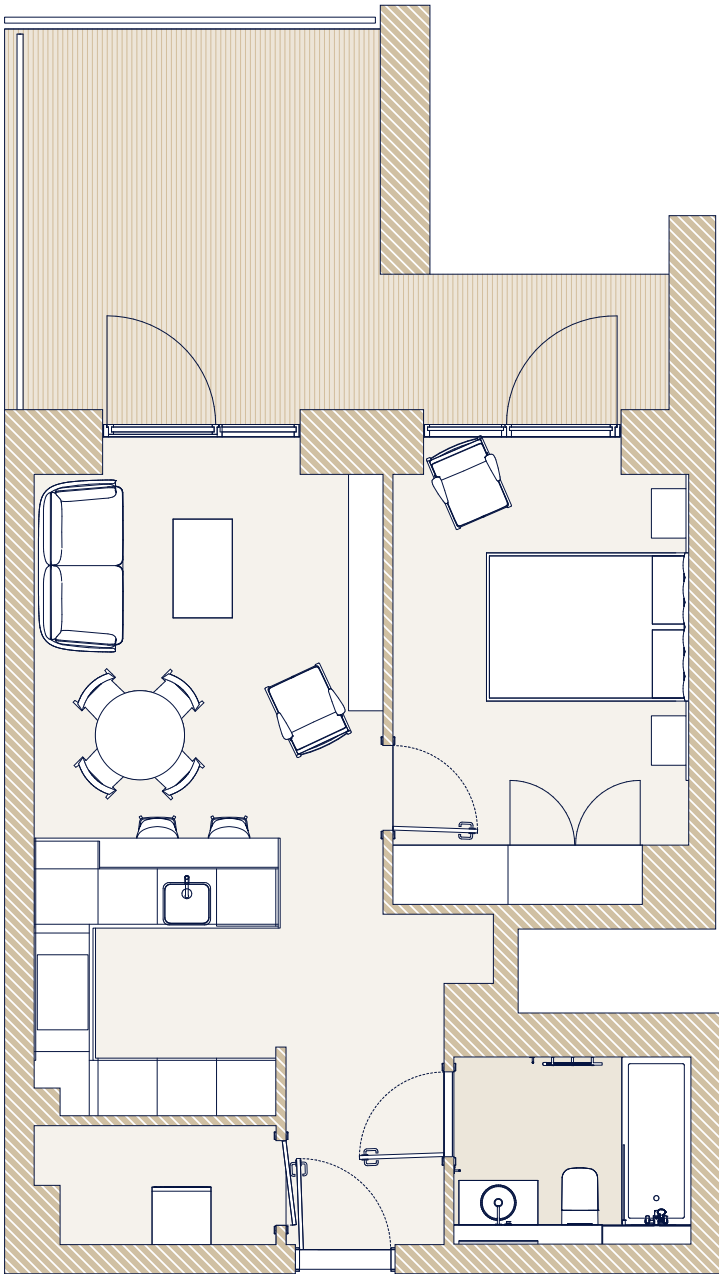
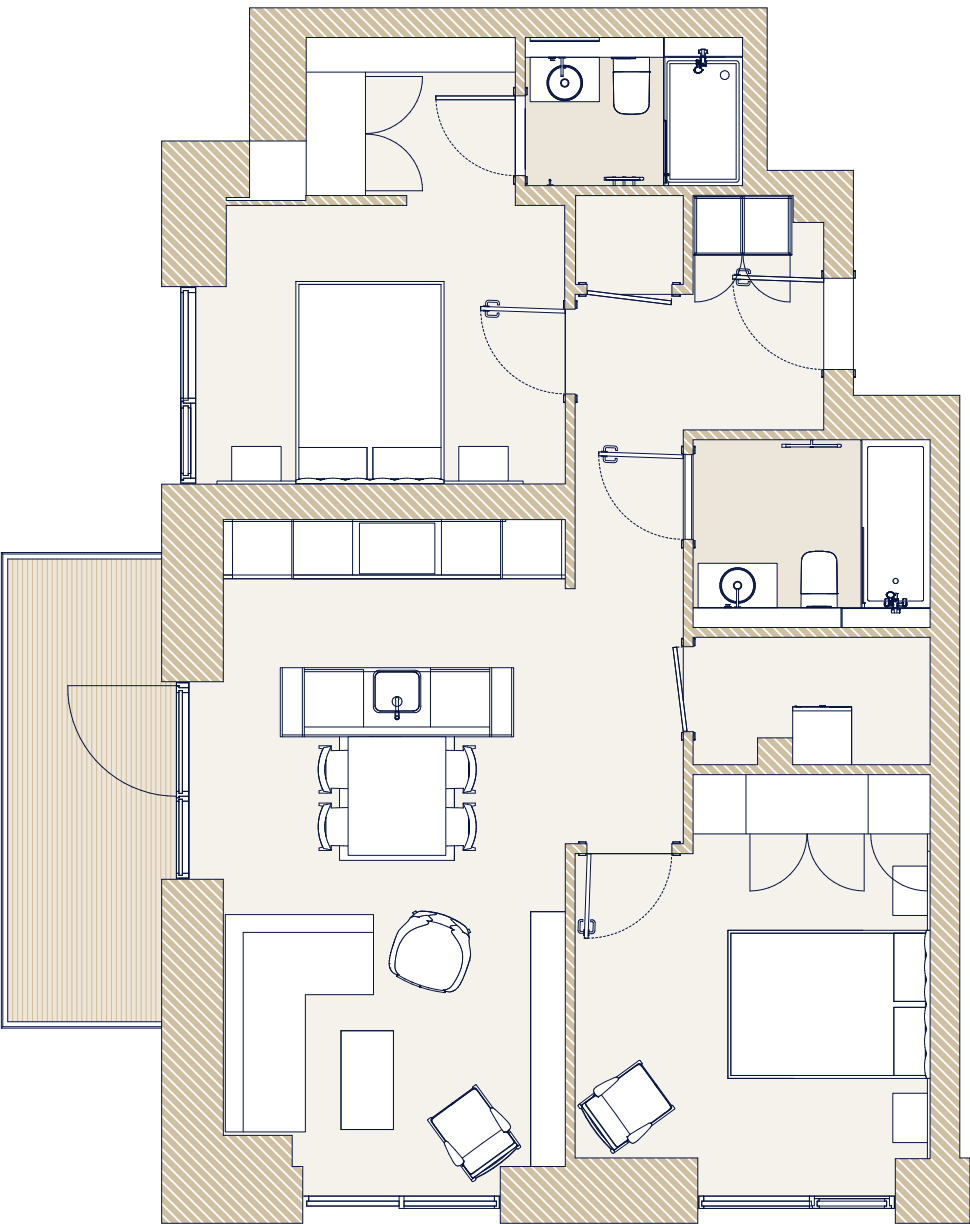
BEDROOM 2
11.35 SQ M

UTILITY
3.61 SQ M

STORAGE
2.95 SQ M

BALCONY
7.07 SQ M

Please note the plans are not to scale and any measurements are indicative only. The developer reserves the right to change and in some cases variations may occur, subject to construction variances and tolerances. Measurements provided are based on Gross Internal Area and exclude balcony/terraced areas.



TYPE R1

1 Bedroom

50.9 SQ M / 547.88 SQ FT

KITCHEN/LIVING
24.45 SQ M

BEDROOM
12.41 SQ M

UTILITY
1.77 SQ M

STORAGE
2.51 SQ M

BALCONY
19.24 SQ M

Please note the plans are not to scale and any measurements are indicative only. The developer reserves the right to change and in some cases variations may occur, subject to construction variances and tolerances. Measurements provided are based on Gross Internal Area and exclude balcony/terraced areas.

TYPE T1

1 Bedroom

54.7 SQ M / 588.78 SQ FT

KITCHEN/LIVING
24.74 SQ M

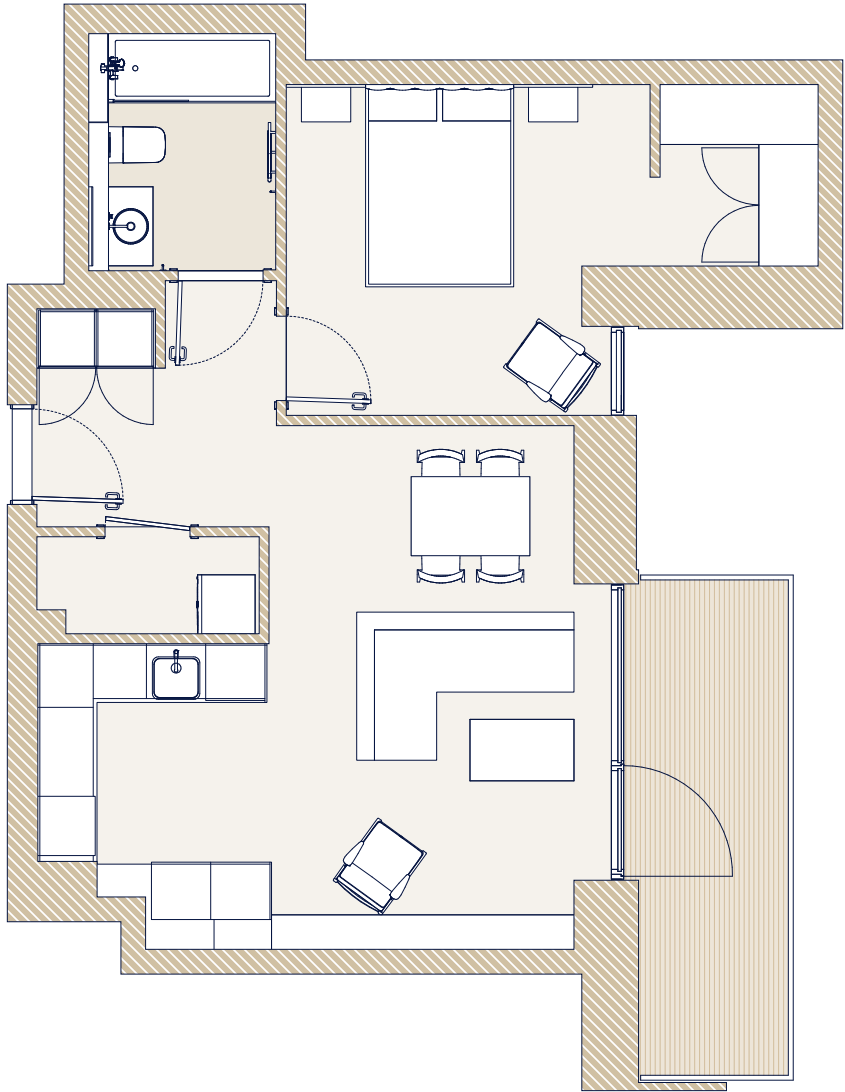
BEDROOM
14.39 SQ M

UTILITY
1.04 SQ M

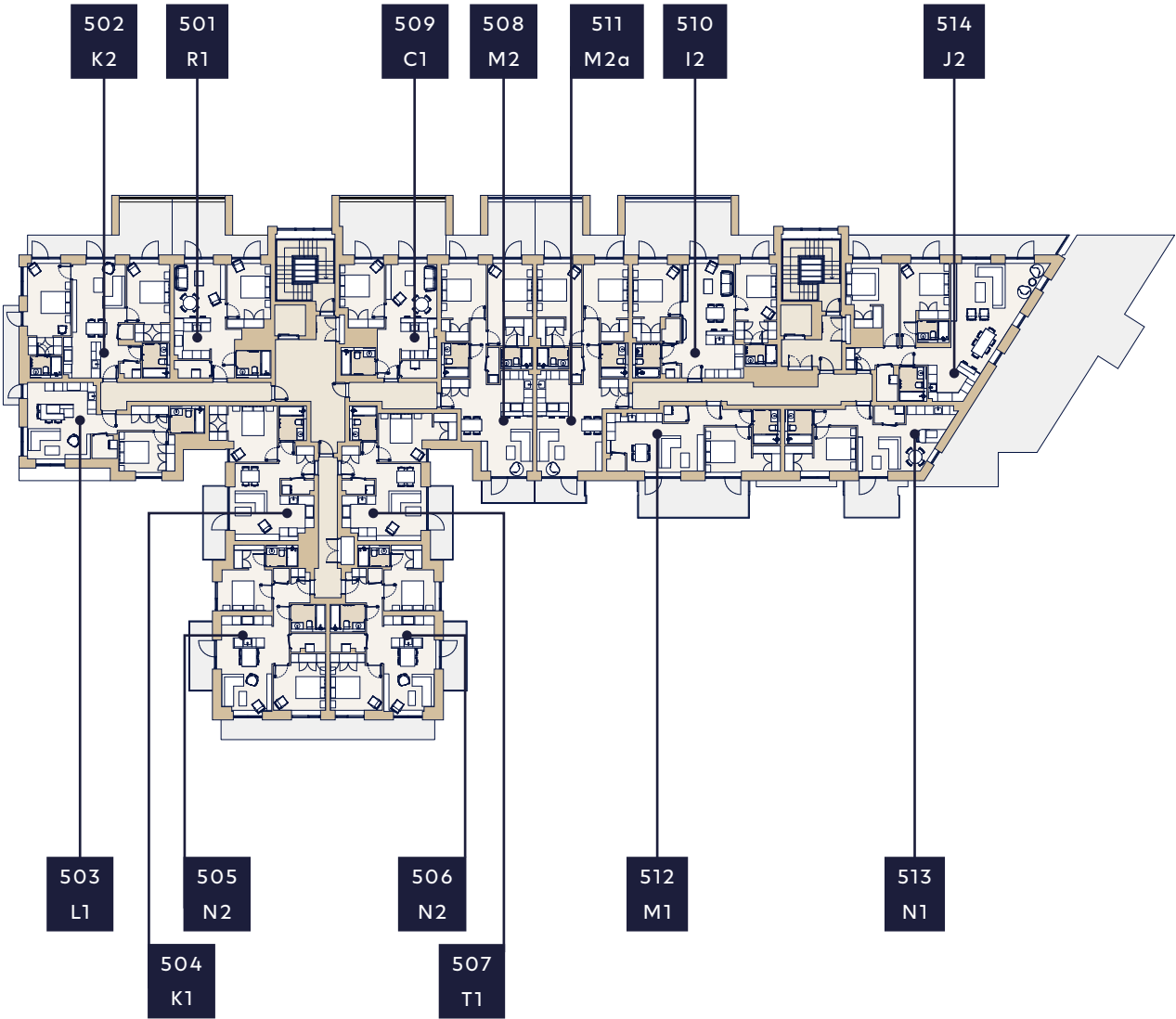
STORAGE
1.93 SQ M

BALCONY
7.73 SQ M

Please note the plans are not to scale and any measurements are indicative only. The developer reserves the right to change and in some cases variations may occur, subject to construction variances and tolerances. Measurements provided are based on Gross Internal Area and exclude balcony/terraced areas.



Fifth Floor



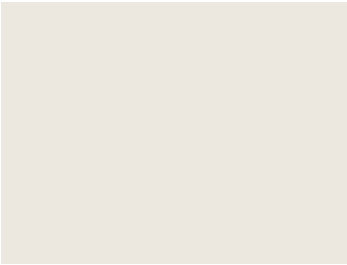
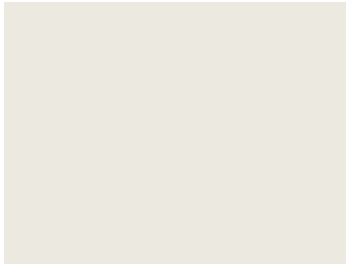



Please note the plans are not to scale and any measurements are indicative only. The developer reserves the right to change and in some cases variations may occur, subject to construction variances and tolerances. Measurements provided are based on Gross Internal Area and exclude balcony/terraced areas.



Specifications


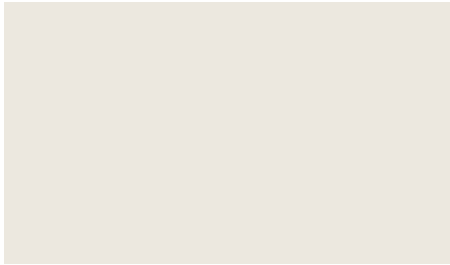
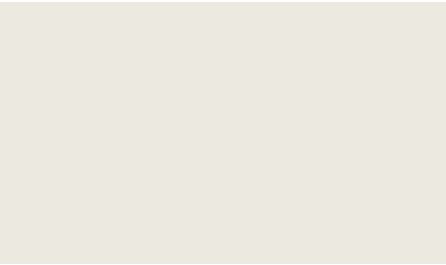

* Information correct at time of printing. Some items may be subject to change to an alternative product of equivalent specification and quality.

ENTRANCE HALL






WALLS	CEILING	MAIN ENTRANCE DOORS	INTERNAL DOORS	INTERNAL DOORS
				
<p>Material: Paint Finish Specification: Dulux Finish: Matt Emulsion Colour: 50YY 83/029</p>	<p>Material: Paint Finish Specification: Dulux Finish: Matt Emulsion Colour: 70YY83037</p>	<p>Type: Entrance Doors Specification: Timber Veneer Finish with Vertical Grain Direction Colour: Lacquered White Oak</p>	<p>Type: Internal Doors Specification: Dulux Paint Finish Ref: 30 YY 58/082 Colour: Paint Grade Hardwood</p>	<p>Type: Internal Doors Specification: Dulux paint finish Ref: 39 YY 53/067 Colour: Paint Grade Hardwood</p>

OMIT SKIRTING	OMIT PLINTH BLOCKS	SOCKETS	SWITCHES
			
<p>Specification: Stepped Profile Size: 22 X 200mm Supplier: Woodworkers Material: Painted finish, Dulux Eggshell Colour: 30 YY 58/082</p>	<p>Specification: Stepped Profile Size: 22 X 200mm Supplier: Woodworkers Material: Painted Finish, Dulux Eggshell Colour: 30 YY 58/082</p>	<p>Type: Socket Description: Double Switched Socket with USB-C Supplier: Hamilton Specification: Hartland CFX Material: Satin Steel with White Insert Reference: 74CSS2USBULTSS-VV</p>	<p>Type: Switches Description: 2 Gang Switch Supplier: Hamilton Specification: Hartland CFX Material: Satin Steel with White Insert</p>


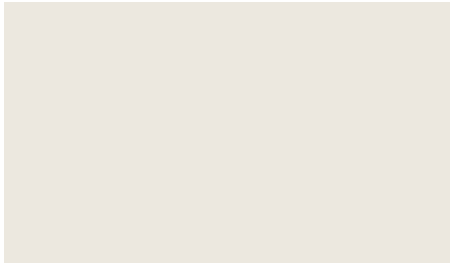
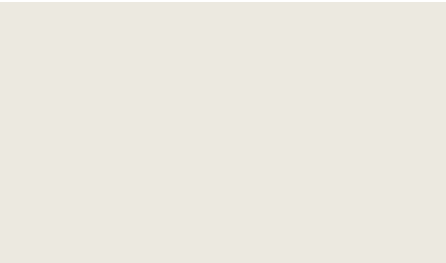

LIVING / DINING ROOM






FLOORING	WALLS	CEILING	LIGHTING
			
<p>Material: Engineered Timber Parquet Floor Specification: Oak 90mm 45° Chevron Colour: 73/2019 Supplier: Castro Format: 90mm Wide Chevron Pattern</p>	<p>Material: Paint Finish Specification: Dulux Finish: Matt Emulsion Colour: 50YY 83/029</p>	<p>Material: Paint Finish Specification: Dulux Finish: Matt Emulsion Colour: 70YY83037</p>	<p>Type: Feature Pendant Location: Breakfast Bar Manufacturer: FERM LIVING Specification: Opal Shade & Socket Pendant Low Finish: White Shade & Brass Pendant Reference: 5148 (shade) & 5106 (pendant)</p>




KITCHEN

WORKTOP	SPLASHBACK	WALL CABINETS	BASE CABINETS	HANDLE
				
Material: Composite Stone Manufacturer: Silestone Specification: Quartz Worktop Ref: Et Calacatta Gold	Material: Composite Stone Manufacturer: Silestone Specification: Quartz Worktop Ref: Et Calacatta Gold	Description: Laminate Specification: Bergamo Oak (843)	Description: Melamine Specification: Sand Ultra Matt (969) Easy Touch	Description: Full Width Handle Specification: 600 Bar Handle (Black)

BEDROOM

FLOORING	WALLS	CEILING	WARDROBE DOORS
			
Material: Enginered Timber Parquet Floor Specification: Oak 90mm 45° Chevron Colour: 73/2019 Supplier: Castro Format: 90mm Wide Chevron Pattern	Material: Paint Finish Specification: Dulux Finish: Matt Emulsion Colour: 50YY 83/029	Material: Paint Finish Specification: Dulux Finish: Matt Emulsion Colour: 70YY83037	Description: Inset Laminate Panel with Timber Veneer Frames Vener Specification: Tabu - 01.004 Sheen: 2% Inset panel specification: Cleaf Kaki FA44 Penelope

GLAZED TALL CABINETS	EXTRACTION HOBS	KITCHEN APPLIANCES	KITCHEN APPLIANCES	KITCHEN APPLIANCES
				
Description: Glass Doors with Black Metal Frame and Glass Shelving Specification: From Kitchen Specialist Range	Type: Downdraft Location: Breakfast Bar Specification: Bora Puru Finish: PUED Installation: Flush	Type: Integrated Oven Microwave Specification: MIELE Finish: Metallic Reference: As Per Kitchen Designer Specification	Type: Integrated Wine Cabinet Specification: MIELE Finish: Metallic Reference: As Per Kitchen Designer Specification	Type: Fridge-Freezer Specification: MIELE Finish: White Painting Reference: As Per Kitchen Designer Specification

CUSTOM HEADBOARDS	SOCKETS	SWITCHES
		
Type: Custom Made Inbuilt Cushioned Headboard with Integrated Light & Mirrors Material: Upholstered Linen fabric Specification: Kvadrat Finish: Hallingdal 65 - 200 Refer: To Bespoke Joinery Drawing	Type: Socket Description: Double Switched Socket with USB -C Supplier: Hamilton Specification: Hartland CFX Material: Satin Steel with White Insert Reference: 74CSS2USBULTSS-W	Type: Switches Description: 2 Gang Switch Supplier: Hamilton Specification: Hartland CFX Material: Satin Steel with White Insert

BATHROOM

FLOORING & SKIRTING



Material: Porcelain Tile
Manufacturer: KEOPE
Specification: Geo White
Finish: R9 - PTV +36 When Wet
Size: 600 x 600 x 9mm
Grout Colour: Mapei 130 Jasmine

WALL TILE



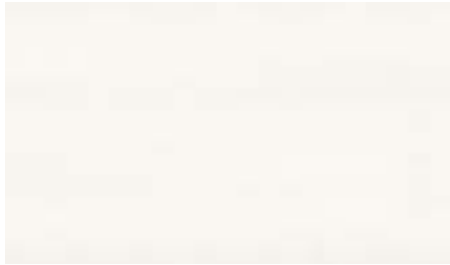
Material: Porcelain Tile
Manufacturer: KEOPE
Specification: Elements Lux Calacatta Gold
Finish: Silky
Size: 1200 x 1200 x 9mm
Grout Colour: Mapei 100 White

BATH BACK WALL



Material: Porcelain Tile
Manufacturer: KEOPE
Specification: Elements Lux Silver Grey
Finish: Silky
Size: 600 x 300 x 9mm
Grout Colour: Mapei 112 Medium Grey

NICHE LINING, BATH TOP, & SHELF



Specification: Composite Stone
Supplier: Ceaser Stone
Colour: Snow 2141
Finish: Polished
Size: 20mm Slab Cut to Size

BACK OF NICHE



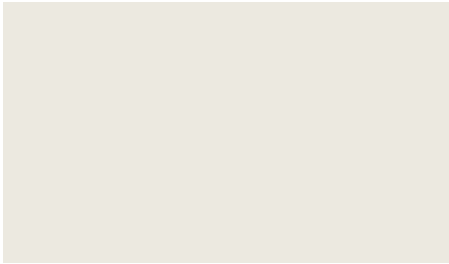
Specification: Full Height Mirror with power to be provided centrally above sink for light and demister

BATH FLOATING SHELVES



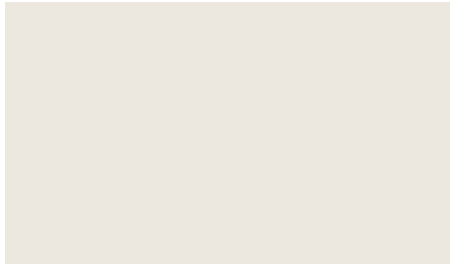
Specification: Composite Stone
Supplier: Ceaser Stone
Colour: Snow 2141
Size: H20mm x D100 X W 150mm

CEILING



Material: Paint Finish
Specification: Dulux
Finish: Matt Emulsion
Colour: 70YY83037

OTHER WALLS



Material: Paint Finish
Specification: Dulux
Finish: Matt Emulsion
Colour: 50YY 83/029

BATHROOM - SANITARYWARE

VANITY UNIT



Manufacturer: GB Group
Specification: Underground Floor Standing Unit with Doubledrawer Unit & Integrated Sink Frame & Towek Rail Finish: Black
Basin Finish: White
Drawers Finish: Elegant Oak
3 Taps Holes Specified for Top

BASIN MIXER



Type: Deck Mounted Basin Mixer
Manufacturer: Dornbracht
Specification: Tara Three Hole Basin Mixer with Pop Up Waste
Finish: Chrome
Reference: 20705882

WC



Type: Wall Hung WC
Manufacturer: Sonas
Specification: Reflections Rimless Back to Wall WC
Finish: White
Reference: REFBTW06

WC FLUSH PLATE



Type: Dual Flush Concealed Cistern
Manufacturer: Sonas (Fluidmaster)
Specification: Front Mounted Activation Plate
Finish: Chrome
Reference: 92216168

TOILET ROLL HOLDER



Type: Wall Toilet Roll Holder
Manufacturer: Sonas (Alita)
Finish: Chrome
Reference: SPA - 180 - CPK

ROBE HOOK



Type: Wall Robe Hook
Manufacturer: Sonas (Alita)
Specification: Robe Hook
Finish: Chrome
Reference: UA0072

RAIN SHOWER HEAD



Type: Wall Mount Rain Shower Head
Manufacturer: Sonas
Specification: Sync Wall Shower Arm & Shower Head
Finish: Chrome
Reference: USH0059 & USH0051

SHOWER SET



Type: Wall Mount Shower Slide Rail Kit
Manufacturer: Sonas (Alita)
Specification: Alita Slide Rail Kit
Finish: Chrome
Reference: USH0033

BATHROOM - SANITARYWARE

SHOWER CONTROL



Type: Dual Control 2 Outlet Valve
Manufacturer: Sonas (Alita)
Specification: Knurled Dual Control 2 Outlet Valve
Finish: Chrome
Reference: USH0094

BATH SCREEN



Type: Bath Screen
Manufacturer: Sonas
Specification: Lunar SB2 Square Edge Bath Screen
Finish: Chrome
Reference: LBS002

BATH



Type: Fitted Bath
Manufacturer: Sonas (Cubo)
Specification: Cubo Single Ended Bath
Finish: White
Reference: UBA 00028

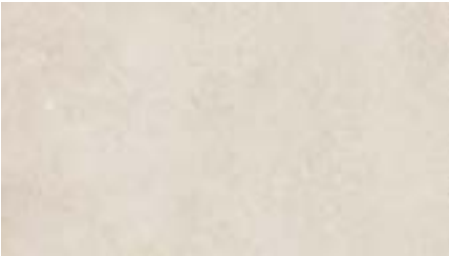
HEATED TOWEL RAIL



Type: Heated Towel Rail
Manufacturer: Inspire
Specification: Lucca
Supplier: Tubs&Tiles
Finish: Chrome
Reference: U15851

ENSUITE

FLOORING & SKIRTING



Material: Porcelain Tile
Manufacturer: KEOPE
Specification: Geo White
Finish: R9 - PTV +36 When Wet
Size: 600 x 600 x 9mm
Grout Colour: Mapei 130 Jasmine

WALL TILE



Material: Porcelain Tile
Manufacturer: KEOPE
Specification: Elements Lux Calacatta Gold
Finish: Silky
Size: 1200 x 1200 x 9mm
Grout Colour: Mapei 100 White

SHOWER BACK WALL



Material: Porcelain Tile
Manufacturer: KEOPE
Specification: Elements Lux Silver Grey
Finish: Silky
Size: 600 x 300 x 9mm
Grout Colour: Mapei 112 Medium Grey

NICHE LINING AND SHELF



Specification: Composite Stone
Supplier: Ceaser Stone
Colour: Snow 2141
Finish: Polished
Size: 20mm Slab Cut to Size

BACK OF NICHE



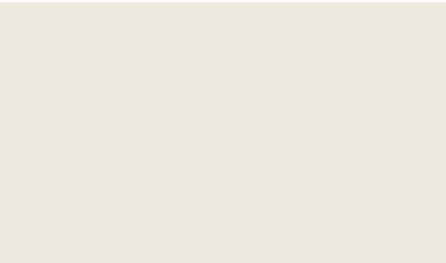
Specification: Full Height Mirror with Power to Be Provided Centrally Above Sink for Light and Demister

SHOWER FLOATING SHELVES



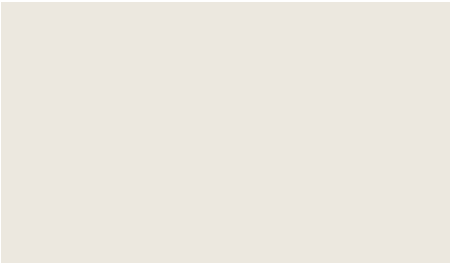
Specification: Composite Stone
Supplier: Ceaser Stone
Colour: Snow 2141
Size: H20mm x D100 X W 150mm

CEILING



Material: Paint Finish
Specification: Dulux
Finish: Matt Emulsion
Colour: 70YY83037

OTHER WALLS



Material: Paint Finish
Specification: Dulux
Finish: Matt Emulsion
Colour: 50YY 83/029

ENSUITE - SANITARYWARE

VANITY UNIT



Manufacturer: GB Group
Specification: Underground Floor Standing Unit with Doubledrawer Unit & Integrated Sink Frame & Towel Rail
Finish: Black
Basin Finish: White
Drawers Finish: Elegant Oak
3 Taps Holes Specified for Top

BASIN MIXER



Type: Deck Mounted Basin Mixer
Manufacturer: Dornbracht
Specification: Tara Three Hole Basin Mixer with Pop Up Waste
Finish: Chrome
Reference: 20705882

WC



Type: Wall Hung WC
Manufacturer: Sonas
Specification: Reflections Rimless Back to Wall WC
Finish: White
Reference: REFBTW06

WC FLUSH PLATE



Type: Dual Flush Concealed Cistern
Manufacturer: Sonas (Fluidmaster)
Specification: Front Mounted Activation Plate
Finish: Chrome
Reference: 92216168

TOILET ROLL HOLDER



Type: Wall Toilet Roll Holder
Manufacturer: Sonas (Alita)
Finish: Chrome
Reference: SPA - 180 - CPK

ROBE HOOK



Type: Wall Robe Hook
Manufacturer: Sonas (Alita)
Specification: Robe Hook
Finish: Chrome
Reference: UA0072

RAIN SHOWER HEAD



Type: Wall Mount Rain Shower Head
Manufacturer: Sonas
Specification: Sync Wall Shower Arm & Shower Head
Finish: Chrome
Reference: USH0059 & USH0051

SHOWER SET



Type: Wall Mount Shower Slide Rail Kit
Manufacturer: Sonas (Alita)
Specification: Alita Slide Rail Kit
Finish: Chrome
Reference: USH0033

ENSUITE - SANITARYWARE

SHOWER CONTROL



Type: Dual Control 2 Outlet Valve
Manufacturer: Sonas (Alita)
Specification: Knurled Dual Control 2 Outlet Valve
Finish: Chrome
Reference: USH0094

HEATED TOWEL RAIL



Type: Heated Towel Rail
Manufacturer: Inspire
Specification: Lucca
Supplier: Tubs&Tiles
Finish: Chrome
Reference: U15851

SHOWER ENCLOSURE



Type: Wall to Wall Shower Enclosure
Manufacturer: Sonas
Specification: Aspect Sliding Door
Finish: Chrome

SHOWER TRAY



Type: Acrylic Shower Tray
Manufacturer: Sonas (Kristal)
Specification: Kristal Large Rectangular Low Profile Shower Trays
Finish: White

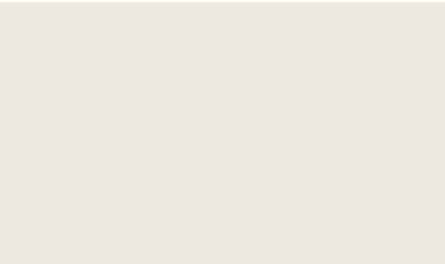
UTILITY & STORAGE

FLOORING



Material: Engineered Timber Parquet Floor
Specification: Oak 90mm 45° Chevron
Colour: 73/2019
Supplier: Castro
Format: 90mm Wide Chevron Pattern

WALLS



Material: Paint Finish
Specification: Dulux
Finish: Matt Emulsion
Colour: 50YY 83/029

OMIT CABINetry

Material: Melamine
Specification: Beige D91

OMIT WORKTOP & SPLASHBACK

Material: Composite Stone
Specification: Ceaserstone 4330 Ginger
Grout Colour: Mapei 134 Silk



We're here to help you find your perfect home.
Contact us today to learn more about Shore Club.

+353 01 237 4500
newhomes@knightfrank.ie
PSR Registration Number: 001880



DISCLAIMER

These particulars are issued by HT Meagher O'Reilly trading as Knight Frank on the understanding that all the negotiations are conducted through them. These particulars do not constitute, nor constitute any part of an offer or contract. All statements, descriptions, dimensions, references to condition, permissions or licenses of use or occupation, access and other details are for guidance only and are made without responsibility on the part of HT Meagher O'Reilly trading as Knight Frank or the vendor. The developer reserves the right to make alterations to design and finish. None of the statements contained in these particulars, as to the property are to be relied upon as statements or representations of fact and any intending purchaser/tenant should satisfy themselves (at their own expense) as to the correctness of the information given. Prices are quoted inclusive of VAT (unless otherwise stated) and all negotiations are conducted on the basis that the purchaser/tenant shall be liable for any VAT arising on the transaction. The vendor does not make or give, and neither HT Meagher O'Reilly trading as Knight Frank or any of their employees has any authority to make or give any representation or warranty whatsoever in respect of this property. Knight Frank is a registered business name of HT Meagher O'Reilly New Homes Limited. Company license Reg. No. 428289. PSR Reg. No. 001880

BROCHURE BY DD LONDON. DD LONDON.COM



SC.P₄

shoreclub.ie

A DEVELOPMENT BY

ROYALTON
GROUP

ROYALTON.CO.UK